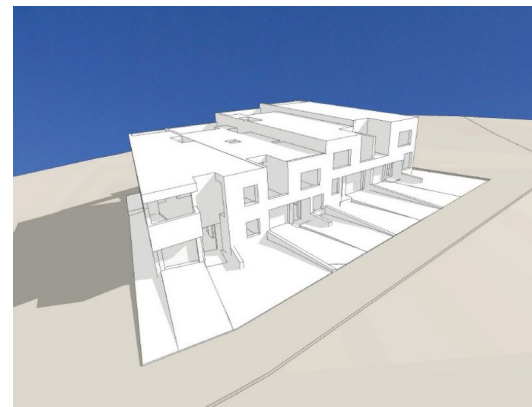
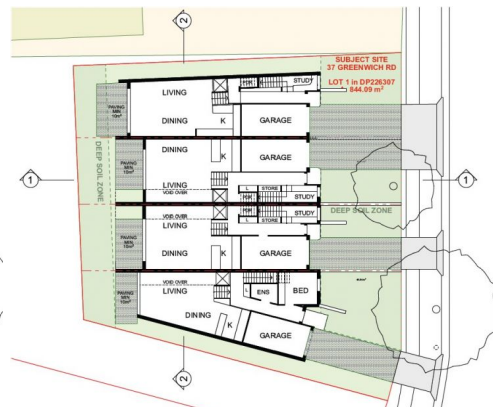
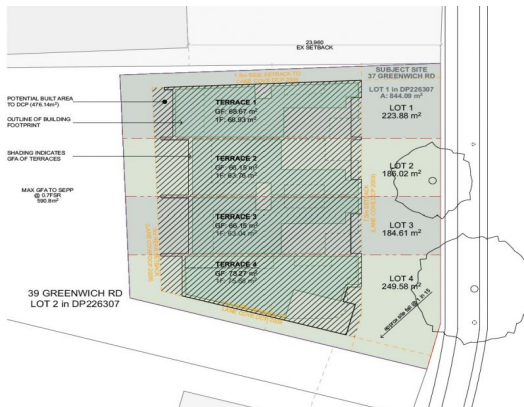




32.88m Frontage



LAND SIZE: 847.3sqm approx



37 Greenwich Road Greenwich, NSW

6 3 3

LMR - OPPORTUNITY FOR 4 TORRENS TOWNHOMES

This rare and exciting near level site invites developers to secure a unique opportunity under the new state government LMR rezoning in the heart of the Greenwich peninsula.

Price: Sold By Chris Keane & Desiree Hough
Council Rates: \$745.00 p/q
Water Rates: \$173.00 p/q



Chris Keane

0497 102 114



Desiree Hough

0404 860 898

37 Greenwich Road,
Greenwich

STONE



The site plan and floor plan are not to scale; measurements are indicative and in metres. Bushes and trees are placed for illustration purposes. Plans should not be relied on. Interested parties should make and rely on their own enquiries. All other information provided has been collected from reliable sources but cannot be guaranteed for accuracy.