



30 Melbourne Road East Lindfield, NSW



Light and Space Abound in Stunning Contemporary Entertainer

Breathtaking across three impressive levels, this fluent full brick home radiates effortless style, embracing natural light and leafy outlooks in a serene, walk-to-everything location. Exquisite hardwood timber floors, large windows, and bespoke finishes enhance its calm yet unmistakably luxurious sophistication.



Andrew Braid

0404 979 597



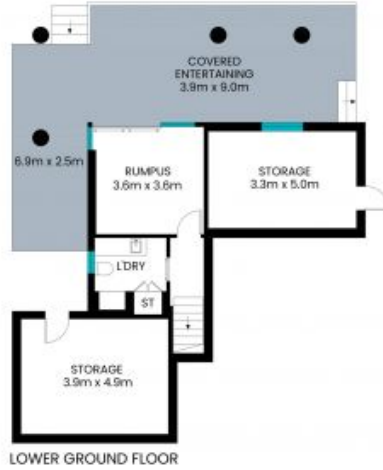
Steven Kourdis

0402 555 675

30 Melbourne Road
East Lindfield



STONE



Internal area: 257m²
Exterior area: 86m²
Garage area: 17m²
Total area: 360m²

The site plan and floor plan are not to scale; measurements are indicative and in meters. Bushes and trees are placed for illustration purposes. Plans should not be relied on. Interested parties should make and rely on their own enquiries. All other information provided has been collected from reliable sources but cannot be guaranteed for accuracy.