



30 Canale Drive Boambee, NSW

3

2

5

Country Living Charm

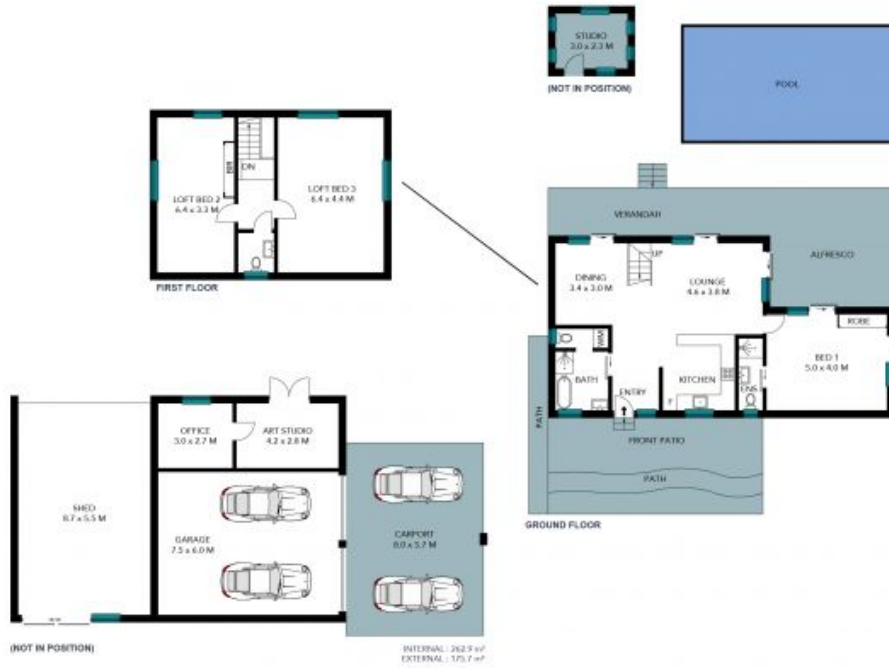
Embrace the tranquility of country living with this unique three-bedroom cottage, tucked away in a quiet cul-de-sac in the highly sought-after Middle Boambee Valley. Just minutes from both Coffs Harbour CBD and the beaches of Sawtell, it's a sanctuary where mornings begin with birdsong and evenings settle in golden light. Set on three quarters of an acre of enchanting gardens and established trees, the home radiates character and charm. Upstairs, two cathedral-ceiling bedrooms capture sweeping views, while the master suite downstairs offers ensuite privacy and leafy pool outlooks. Light-filled living, dining, and kitchen spaces flow onto a wide verandah-perfect for morning coffee or sunset wine. Outdoors, the sparkling in-ground pool, two versatile studios, and a five-bay shed create endless opportunities for work, creativity, or hobbies. Solar power, veggie gardens, and room to grow fruit trees or expand add to its sustainable appeal.

Price: \$1,300,000
Council Rates: \$633.50 p/q



Lisa Covelli
 0414 181 556

30 Canale Dr
Boambee, NSW 2450



The site plan and floor plan are not to scale; measurements are indicative and in metres. Bushes and trees are placed for illustration purposes. Plans should not be relied on. Interested parties should make and rely on their own enquiries. All other information provided has been collected from reliable sources but cannot be guaranteed for accuracy.