

10F/19-21 George Street North Strathfield, NSW 2  2  1 

Stylish Two-Bedder in the Popular 'Strathaven' Complex

Situated in Building F on the second floor of the 'Strathaven' complex, this well-presented apartment offers an ideal blend of space, style, and low-maintenance living. With generous interiors and access to resort-style facilities, Set within a secure and well-maintained building, this home is just a short stroll to North Strathfield train station, the Bakehouse Quarter, local parks and everyday amenities.

Price: Deposit Taken
Available Date: 13/10/2025



Irma Rinaudo

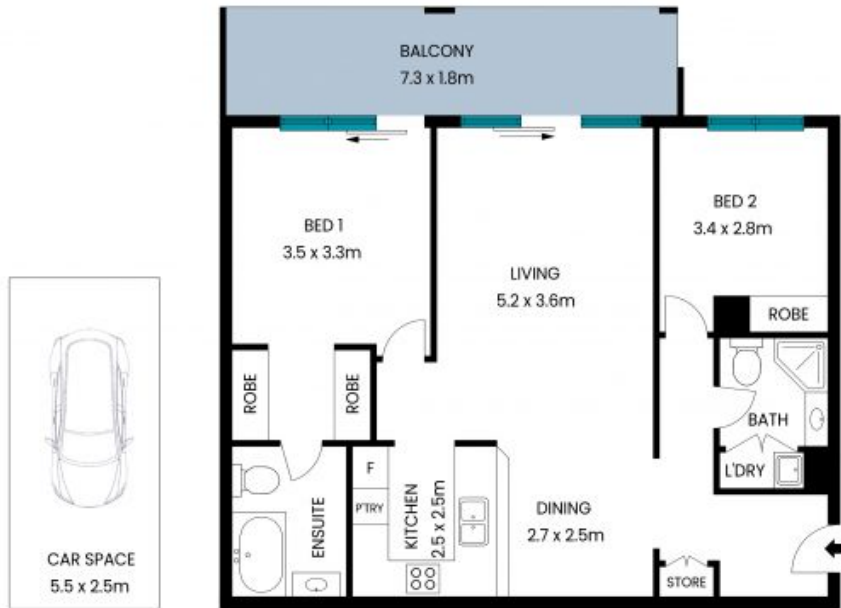
0426 240 502



Jennifer Howard

0412 630 727

10F/19-21 George Street
North Strathfield



All measurements are in meters. This plan is for reference only, and the dimensions are approximate. The information provided is sourced from what is believed to be reliable, but we do not take responsibility and disclaim all liability for any errors, inaccuracies, or misstatements. Interested parties should conduct their own inquiries.

