

31/14-20 Gerard Street Cremorne, NSW

2 1 1

### MODERN 2 BEDROOM APARTMENT WITH STUNNING PANORAMIC VIEWS

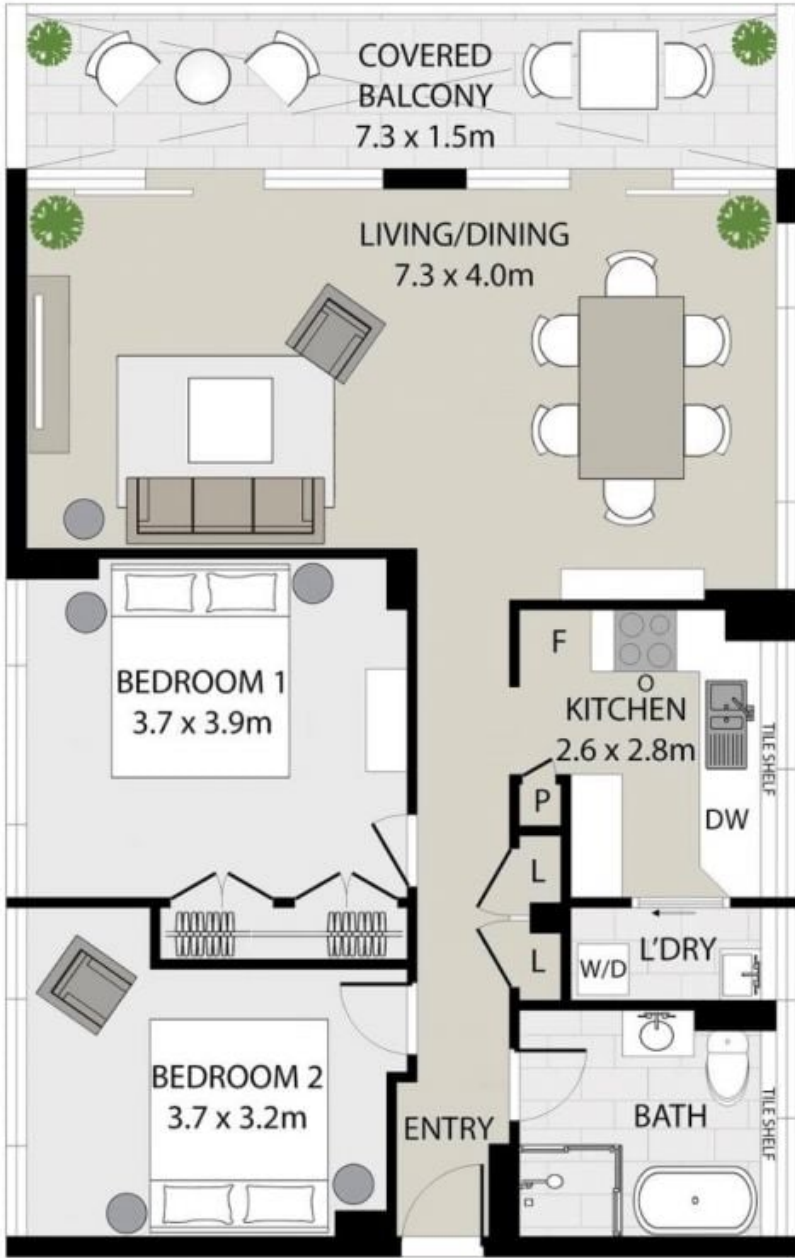
This apartment delivers stunning panoramic district and water views from every room stretching from the coastline, through Middle Harbour and around to the sparkling lights of North Sydney and the CBD.

**Price:** \$1000 pw  
**Bond:** \$4,000  
**Available Date:** 23/09/2025

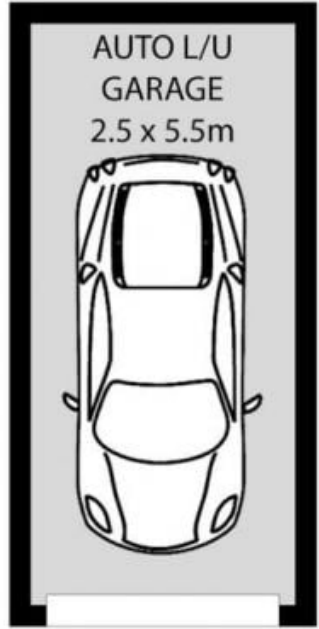


**Jacqui Stanley**

0419 024 043



LEVEL 11



GROUND LEVEL



All information contained in this document is from sources we believe to be accurate, however we cannot guarantee its accuracy. Interested persons should make and rely on their own enquiries in relation to measurements, dimensions, layout furniture and descriptions.

TOTAL AREA : 102 M<sup>2</sup>