



306/49 The Esplanade Ettalong Beach, NSW 2 2 1

Modern Beachside Luxury Apartment ? Prime Ettalong Location

Experience coastal living in this stylish, contemporary apartment located just steps from the sands of Ettalong Beach. Positioned in the heart of town, you'll enjoy easy access to vibrant cafes, restaurants, shopping, and all local amenities.

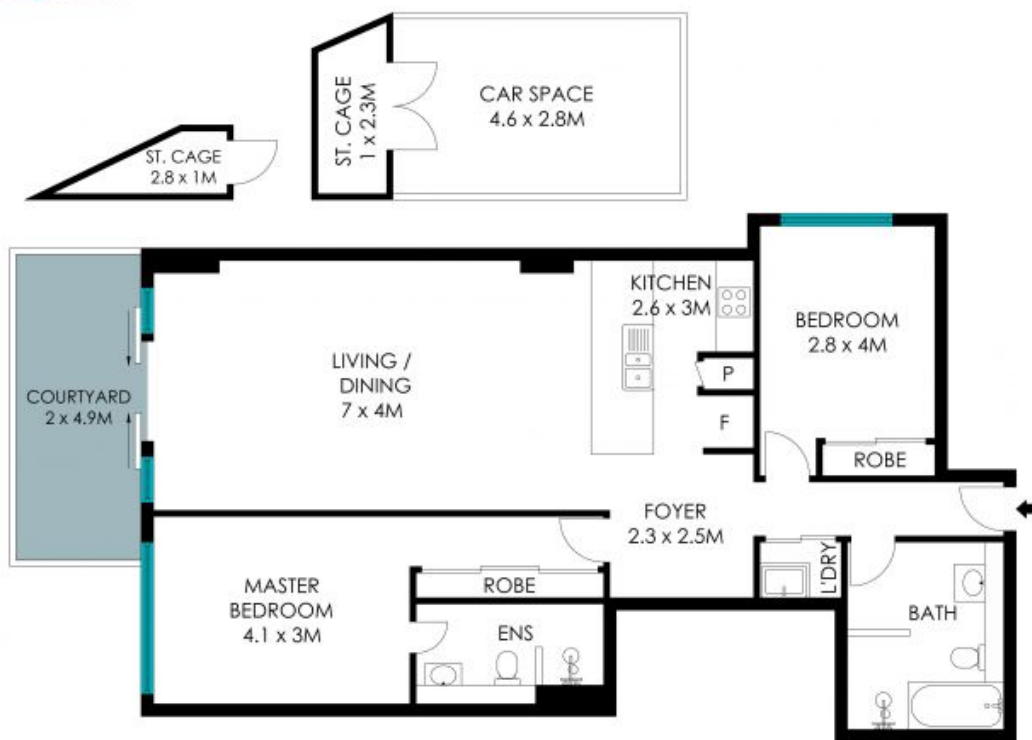
Price: \$895,000
Council Rates: \$1,212.59/year (approx)
Water Rates: \$1,099.08/year (approx)
Strata Rates: \$1,116.35 p/q



Helen Hughes
0418 220 622



Lian O'Grady
0423 688 275



Total Living Area: 116 sqm



The site plan and floor plan are not to scale; measurements are indicative and in metres. Bushes and trees are placed for illustration purposes. Plans should not be relied on. Interested parties should make and rely on their own enquiries. All other information provided has been collected from reliable sources but cannot be guaranteed for accuracy.