



35 Wallarah Circuit Gregory Hills, NSW



North-Facing Family Home in the Heart of Gregory Hills and Walk to School

Positioned on a quiet, family-friendly street, this north-facing residence offers the perfect balance of style, space, and practicality. With a functional floorplan and modern finishes, it's an ideal choice for first-home buyers, young families, or investors seeking a move-in ready home.

Price: \$980,000



Gagan Bindra

0425 243 959

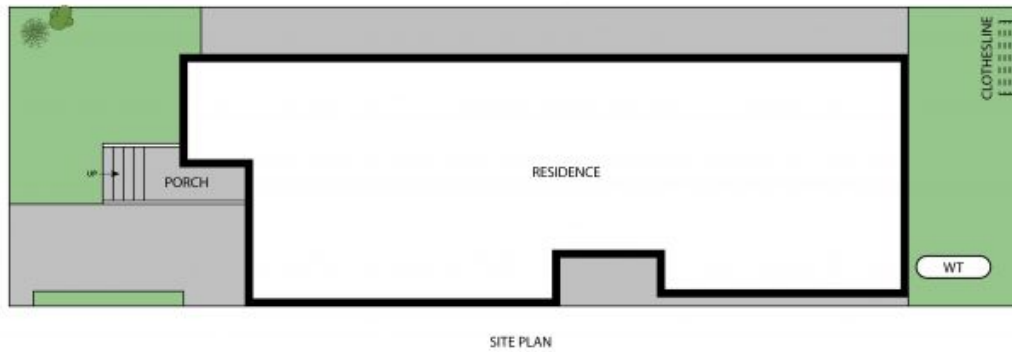
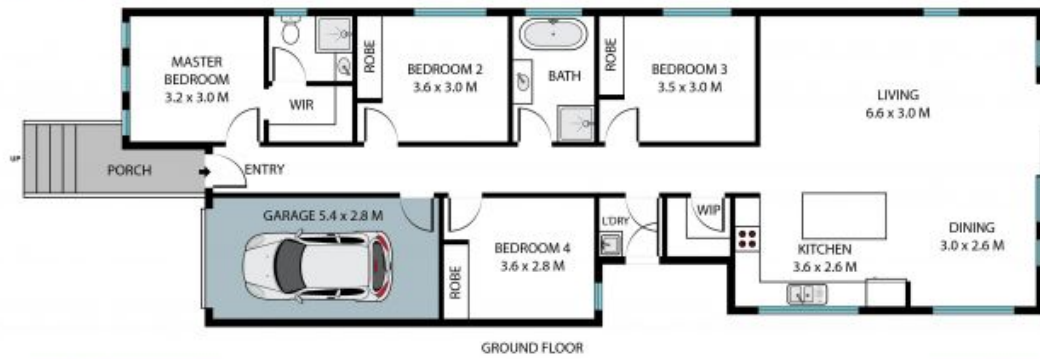


Karan Thapar

0401 093 434

35 Wallarah Circuit
Gregory Hills

STONE



Land Area: 270 sqm

The site plan and floor plan are not to scale; measurements are indicative and in metres. Bushes and trees are placed for illustration purposes. Plans should not be relied on. Interested parties should make and reply on their own enquiries. All other information provided has been collected from reliable sources but cannot be guaranteed for accuracy.