

120 Elizabeth Place Beveridge, VIC



Country Living on 20 Acres ? A Rare Beveridge Retreat

Discover the perfect blend of lifestyle, space, and privacy at 120 Elizabeth Place, Beveridge. Nestled on 20 fenced acres with panoramic views and a picturesque creek, this charming 4-bedroom homestead offers the serenity of country living. Positioned right on the Eden Park border, it's your private escape within reach of amenities.

Price: \$1,450,000



Dean Zammit

0405 140 704



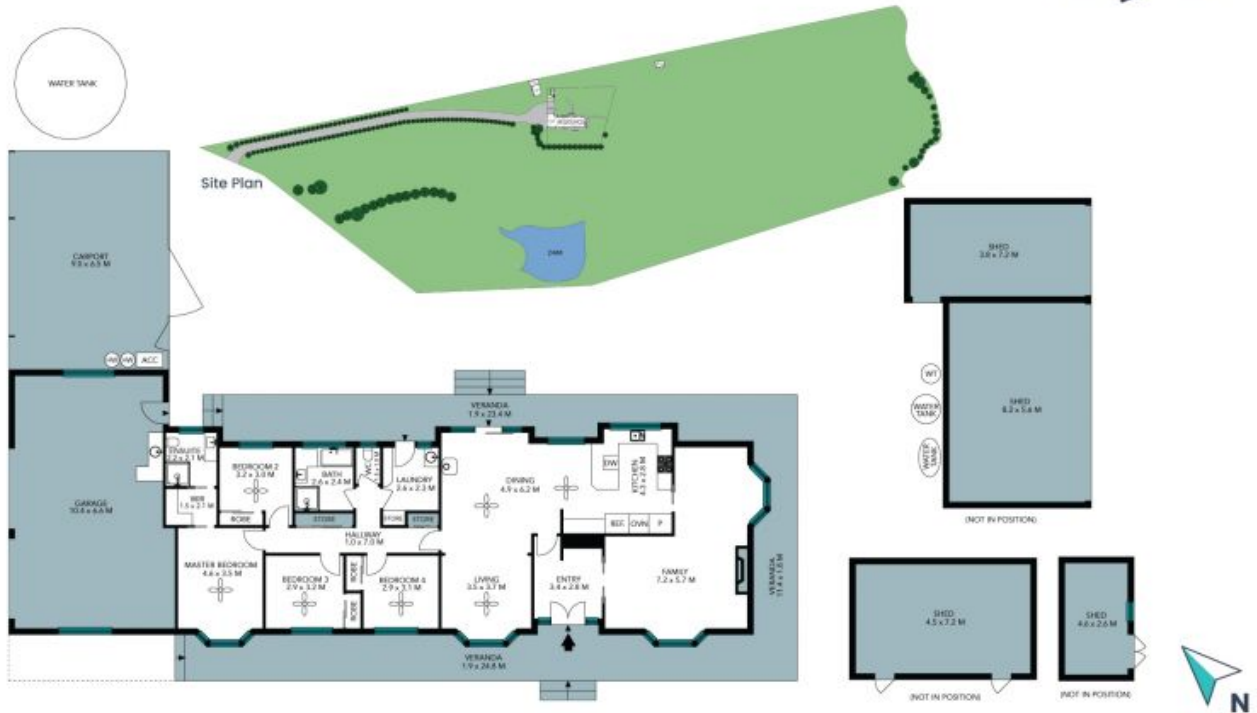
Kristin Parker

0425 210 602

120 Elizabeth Place
Beveridge



The floor plan is not to scale; measurements are indicative and in metres. All features included in this 3D plan are for inspiration purposes only. This is not an exact replica of the property or the position of exterior elements. Plans should not be relied on. Interested parties should make and rely on their own enquiries.



The site plan and floor plan are not to scale; measurements are indicative and in metres. Bushes and trees are placed for illustration purposes. Plans should not be relied on. Interested parties should make and rely on their own enquiries. All other information provided has been collected from reliable sources but cannot be guaranteed for accuracy.