



23 Ann Parade New Lambton, NSW

3 

1 

1 

Exclusive Lifestyle Location

Showcasing an exclusive position overlooking Coronation Park and literally just metres from Orchardtown Road Village shops, this three bedroom home presents an exciting opportunity in one of New Lambton's most convenient and family-friendly locations. An ideal home for someone looking to add their own touches to create a dream home that will no doubt be enjoyed for years to come.

Price: \$1,295,000



Todd Mason

0427 480 780

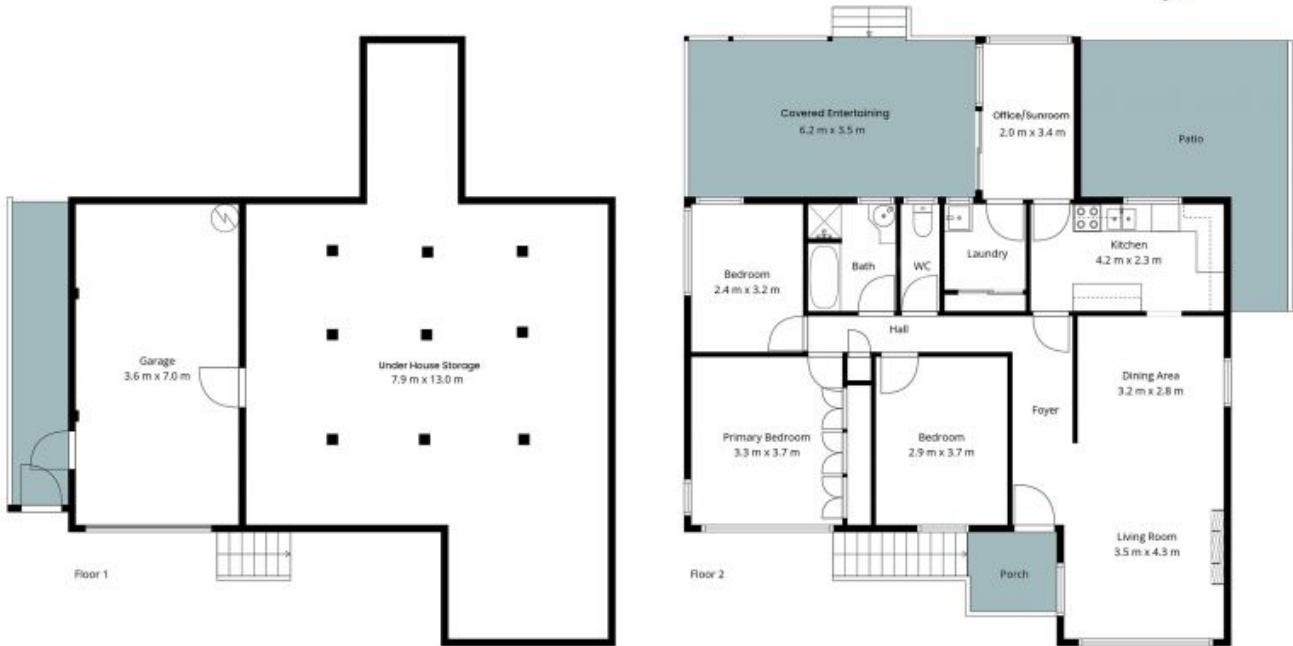


Sienna Mason

0407 809 981

23 Ann Parade
New Lambton

STONE



The site plan and floor plan are not to scale; measurements are indicative and in metres. Bushes and trees are placed for illustration purposes. Plans should not be relied on. Interested parties should make and rely on their own enquiries. All other information provided has been collected from reliable sources but cannot be guaranteed for accuracy.

