



62/4-6 Park Avenue Waitara, NSW



Peaceful and convenient with contemporary appeal

With its peaceful back of block setting, generous contemporary spaces and outstanding location with convenience at its heart, this apartment presents compelling buying. Nestled within a stylish, well-maintained security complex with level lift access and secure parking, it offers an exceptional indoor to outdoor lifestyle with the living room opening out to a substantial balcony that is sized for easy entertaining. This is perfect for first home buyers, investors or those seeking an easy care lifestyle, metres to Mark Taylor Oval, bus services and the station, and a stroll to Westfield and Hornsby Hospital.

Price:

SOLD BY ANDY HOWDEN & HARRY BACALES



Andy Howden

0423 264 989

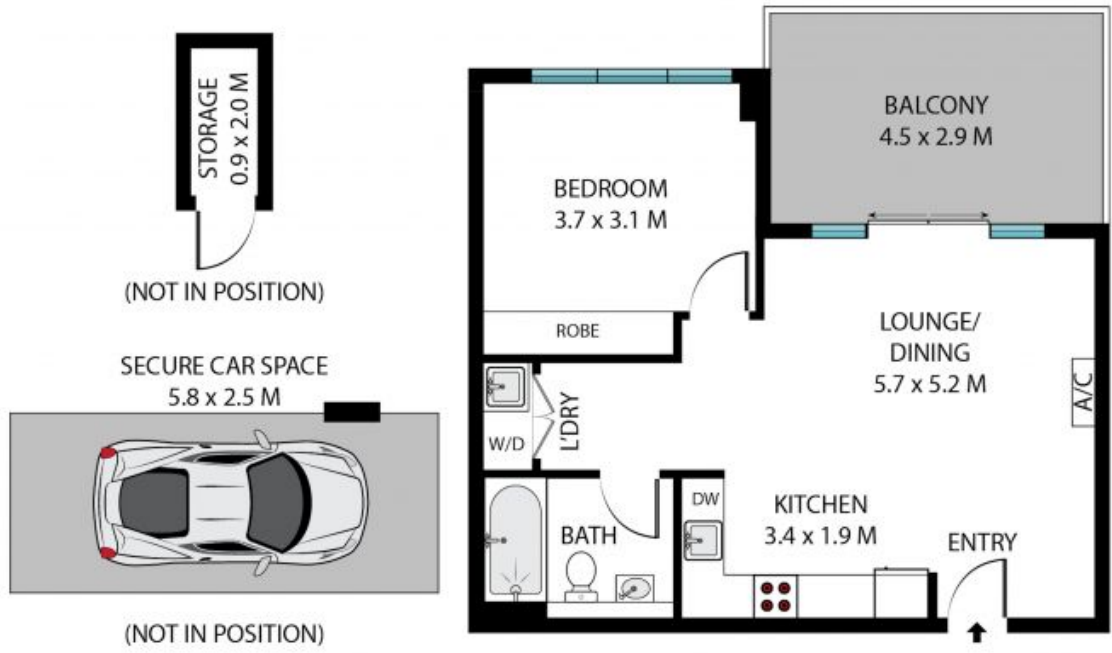


Harry Bacales

0436 656 484

62/4-6 Park Avenue,
Waitara

STONE



The site plan and floor plan are not to scale; measurements are indicative and in metres. Bushes and trees are placed for illustration purposes. Plans should not be relied on. Interested parties should make and reply on their own enquiries. All other information provided has been collected from reliable sources but cannot be guaranteed for accuracy.