

12 Amber Close Mango Hill, QLD



Spacious Family Entertainer in a Prime Mango Hill Location!

Welcome to 12 Amber Close, Mango Hill - a stunning double-storey home perfectly positioned in a quiet cul-de-sac and designed with family living in mind. Set on a generous 502m2 block, this home offers the ideal blend of comfort, functionality, and lifestyle appeal.

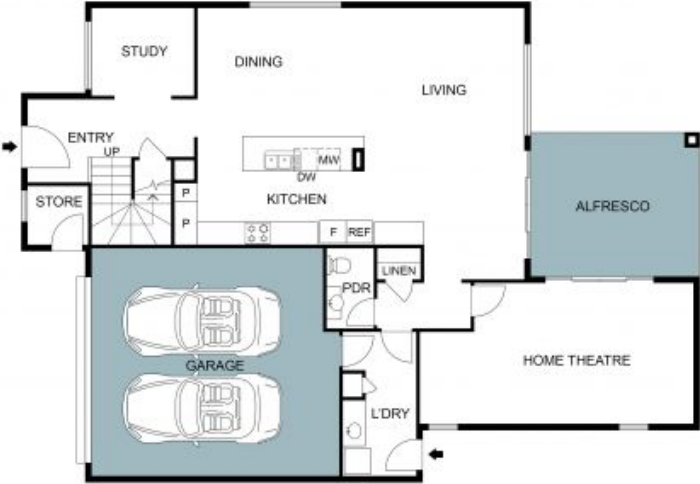
Price:

Inviting Offers



Jarod Faulkner

0457 549 088



Ground Floor Plan



First Floor Plan

The Floor plan is not to scale; measurements are indicative and in metres. Plans should not be relied on. Interested parties should make and rely on their own enquiries. All other information provided has been collected from reliable sources but cannot be guaranteed for accuracy.