



302 President Avenue Gymea, NSW

3 1 1

Convenient, comfortable & move-in ready

Discover a rare opportunity to secure a beautifully renovated, solid brick home perfectly positioned in one of Gymea's most family-friendly and convenient pockets. This single-level residence offers a harmonious blend of classic durability and modern upgrades, delivering a lifestyle of effortless comfort and easy entertaining. Whether you are a downsizer seeking a low maintenance sanctuary or an investor looking for a property with a secure long term rental in place, this home offers unmatched value and lifestyle benefits. Just moments from local shops, vibrant cafes, schools, and public transport.

Price: \$1,485,000
Council Rates: \$415.63 p/q
Water Rates: \$170.90 p/q

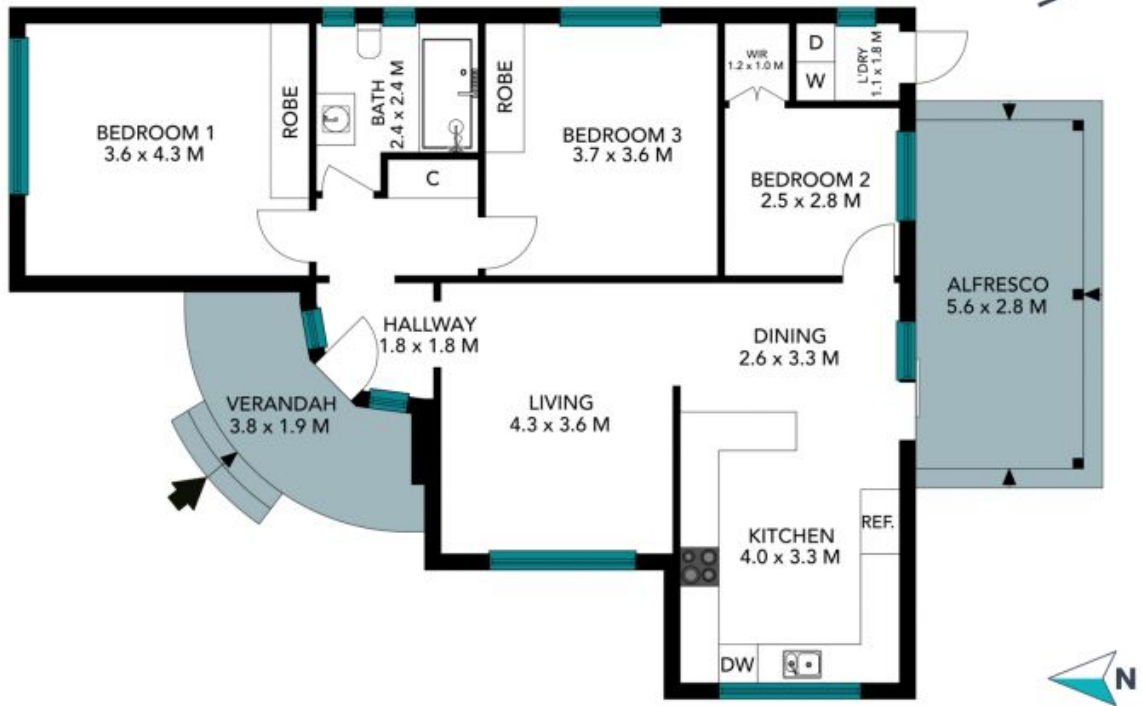


Gerard Foote

0433 421 333

302 President Avenue
Gymea

STONE



The floor plan is not to scale; measurements are indicative and in metres. Exterior elements are not in position. Plans should not be relied on. Interested parties should make and rely on their own enquiries. All other information provided has been collected from reliable sources but cannot be guaranteed for accuracy.

302 President Avenue
Gymea

STONE



The floor plan is not to scale; measurements are indicative and in metres. All features included in this 3D plan are for inspiration purposes only. This is not an exact replica of the property or the position of exterior elements. Plans should not be relied on. Interested parties should make and rely on their own enquiries.