



Unit 7/18 Rudder Street East Kempsey, NSW

2  1  1 

Two-Bedroom Unit with River Views in the Allandale Complex

Located in the Allandale complex, Enjoy low maintenance living with uninterrupted views over the Macleay River, all within minutes of Kempsey's CBD.

Price: \$419,000
Council Rates: \$2,891.40/year (approx)
Strata Rates: \$799.09 p/q



Carlos Peters

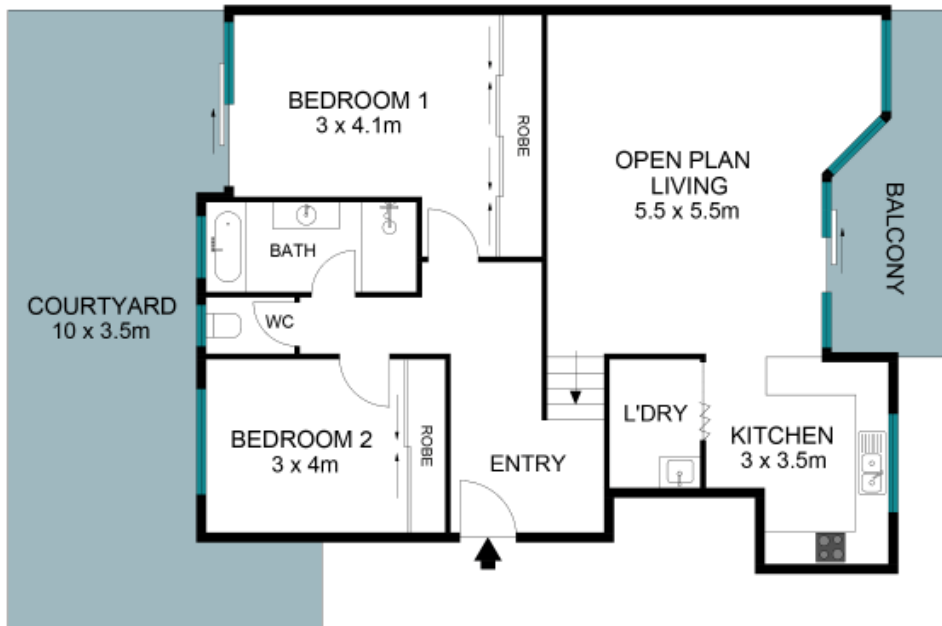
0427 256 570



Carlos Peters

0427 256 570

7/18 Rudder Street
East Kempsey



The site plan and floor plan are not to scale; measurement are indicative in meters. Bushes and trees are placed for illustration purposes. Plans should not be relied on. Interested parties should make and rely on their own inquiries. All other information provided has been collected from reliable sources but cannot be guaranteed for accuracy.