



304/450 Military Road Mosman, NSW



Elite lifestyle pad or investment in a prime spot

Placed on the third floor of the exclusive 'Braebrook' with lift access, this impressive security apartment delivers the ultimate mix of relaxed luxury and lifestyle. Wonderfully bright and spacious, styled with elegant contemporary finishes and extending to a giant covered terrace, it is nestled amid manicured common lawns and landscaped gardens within footsteps of Manly Beach and city buses, vibrant eateries and shopping at Cremorne Town Centre, as well as the iconic Hayden Orpheum Picture Palace.

Price: Contact Agent
Council Rates: \$369.00 p/q
Water Rates: \$172.83 p/q
Strata Rates: \$878.38 p/q



Mark Skeens

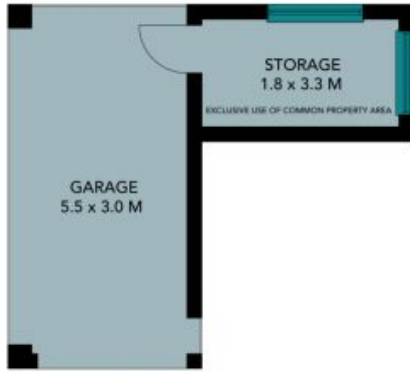
0401 241 381



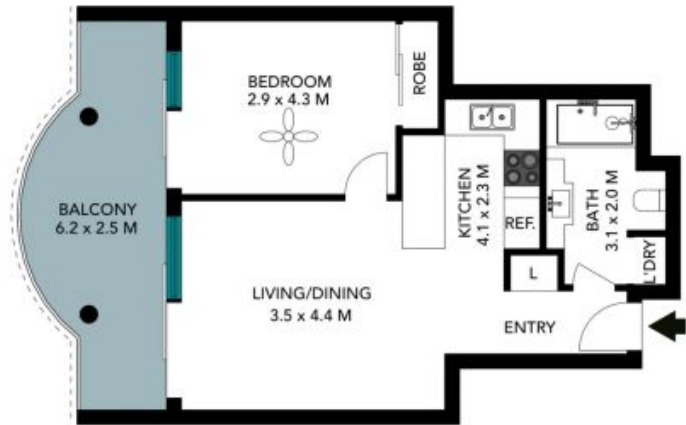
Ryan Wilson

0421 642 814

304/450 Military Road
Mosman

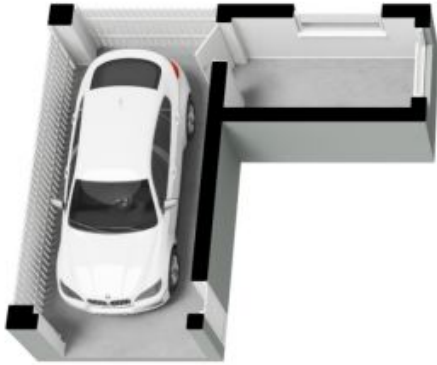


(NOT IN POSITION)



The floor plan is not to scale, measurements are indicative and in metres. Exterior elements are not in position. Plans should not be relied on, interested parties should make and rely on their own enquiries. All other information provided has been collected from reliable sources but cannot be guaranteed for accuracy.

304/450 Military Road
Mosman



The floor plan is not to scale; measurements are indicative and in metres. All features included in this 3D plan are for inspiration purposes only. This is not an exact replica of the property or the position of exterior elements. Plans should not be relied on. Interested parties should make and rely on their own enquiries.