



15 Norman Hunter Close Kincumber, NSW



For Lease ? Spacious Family Home in Peaceful Cul-de-Sac

Positioned in a quiet cul-de-sac surrounded by quality homes, this beautifully maintained residence offers the perfect lifestyle for families seeking space, comfort, and convenience. With a sun-soaked north-facing aspect, multiple living zones, and a seamless indoor/outdoor flow, this home is designed for easy modern living and entertaining.

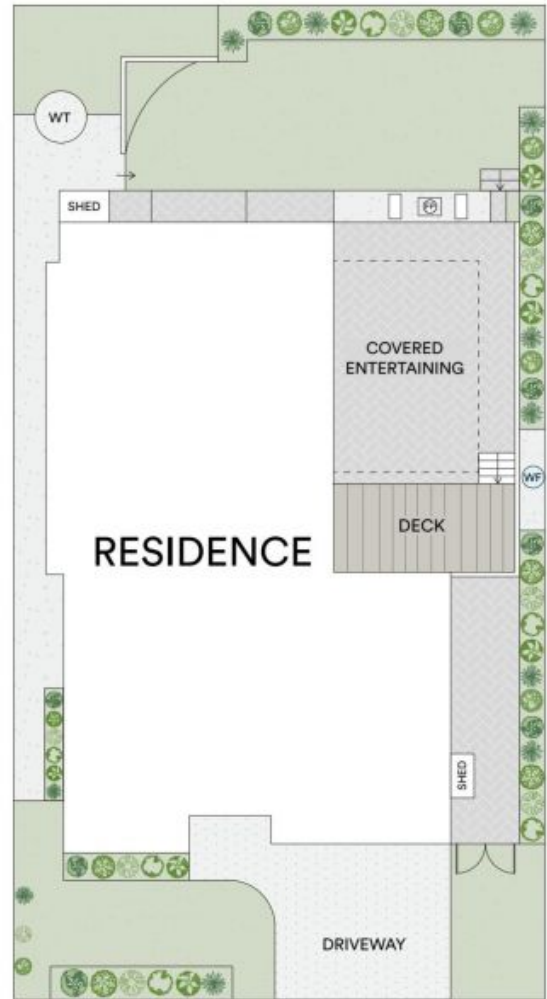
Price: \$950 pw
Available Date: 15/10/2025



Tamara Lee
0474489789



Charlie Killorn
0476 001 295



NORMAN HUNTER CLOSE



All information contained in this document is from sources we believe to be accurate, however we cannot guarantee its accuracy. Interested persons should make and rely on their own enquiries in relation to measurements, dimensions, layout, furniture and descriptions.

INTERNAL AREA: 209M²
 EXTERNAL AREA: 394M²
 LAND SIZE: 603M²