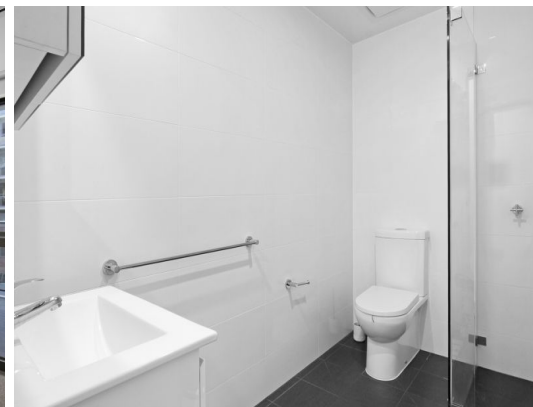
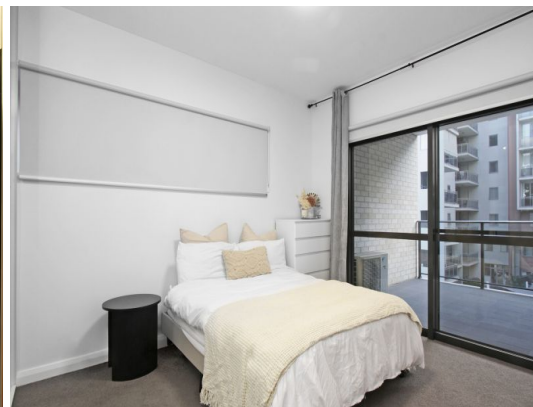


STONE



303/9-15 Northumberland Street Liverpool, NSW



### Low maintenance and neatly presented apartment

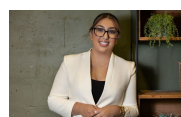
Well proportioned and neatly presented, this low maintenance apartment is a conveniently placed suburban retreat. It's located within walking distance of Westfield Liverpool, Liverpool Hospital and Warwick Farm/Liverpool Stations, located opposite Liverpool Pioneers Park.

**Price:** \$580 pw  
**Bond:** \$2,320  
**Available Date:** 04/11/2025



**Danielle Reynolds**

0432 790 090



**Eevet Arabo**

0402 100 814