



102/575 Sydney Road Seaforth, NSW

2 2 2

Exclusive Apartment in the Heart of Seaforth Village

One of just five in the exclusive 'Seaforth Residences', a boutique security building designed by PBD Architects especially for the sophisticated buyer, this luxury apartment promises the perfect combination of contemporary style and local convenience. Generously proportioned, with beautifully appointed interiors and premium finishes, the apartment offers north-facing open concept living/dining that extends out onto a covered entertaining terrace. With underground security parking and lift access to the door, this fabulous apartment offers an enviable Beaches lifestyle just footsteps from cafes, restaurants, village shopping and buses.

Price: Leased
Bond: \$6,000
Available Date: 25/10/2025



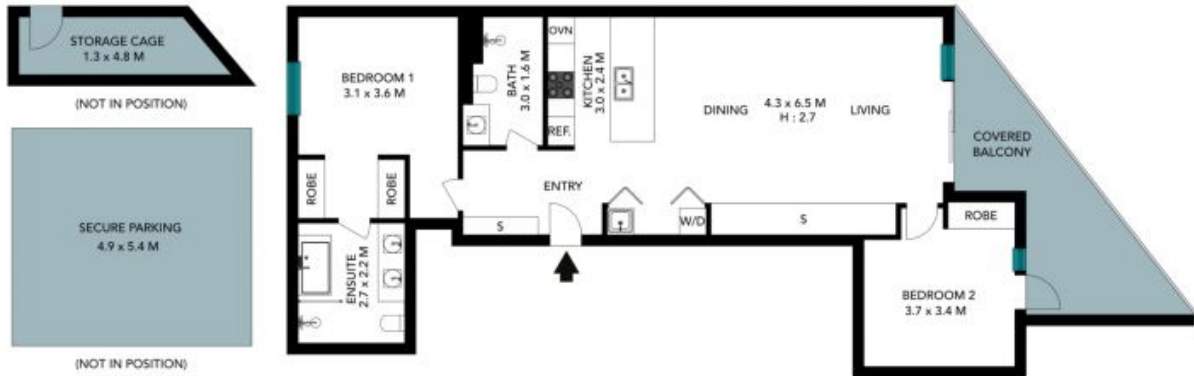
Anthony Zakos

0419 503 000



Claire Kinnaird

0432 038 151



FLOORSPACE INC BALCONY - 104 SQM
GARAGE - 26 SQM
STORAGE - 5 SQM
TOTAL - 135 SQM



The floor plan is not to scale, measurements are indicative and in metres. Exterior elements are not in position. Plans should not be relied on, interested parties should make and rely on their own enquiries. All other information provided has been collected from reliable sources but cannot be guaranteed for accuracy.

102/575 Sydney Road
Seaforth



The floor plan is not to scale; measurements are indicative and in metres. All features included in this 3D plan are for inspiration purposes only. This is not an exact replica of the property or the position of exterior elements. Plans should not be relied on. Interested parties should make and rely on their own enquiries.