



15/346 Pennant Hills Road Carlingford, NSW      2      1      1

### Spacious Full Brick Unit in Central Location

This full brick unit offers a spacious and light-filled interior in the middle level. Ultra-convenient location with every amenity at your doorstep, only minutes walk to Carlingford Court & Village Shopping Centres, schools, library and future light rail.

**Price:** Under Offer  
**Council Rates:** \$112.80 p/q  
**Water Rates:** \$150.99 p/q



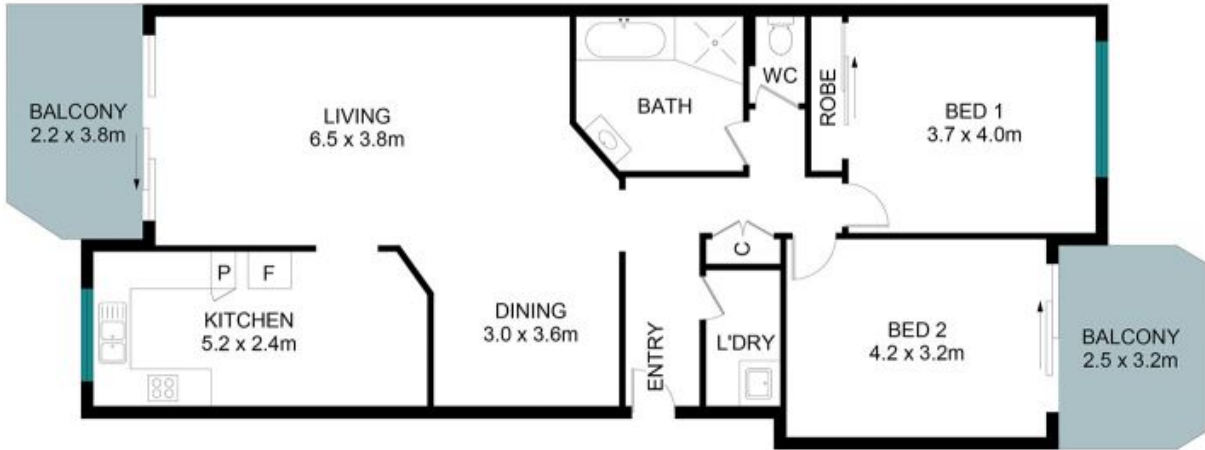
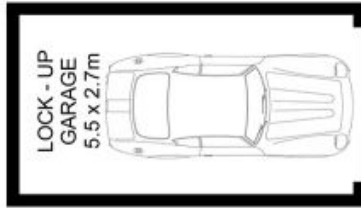
**Juliet (Jiangmin) Chen**

0408 997 997



**Juliet (Jiangmin) Chen**

0408 997 997



The floor plan is not to scale; measurements are indicative and in metres. Exterior elements are not in position. Plans should not be relied on. Interested parties should make and rely on their own enquiries.



15/346 Pennant Hills Road, Carlingford

Internal Area Approx. - 96 sqm  
External Area Approx. - 16 sqm  
Total Area Approx. - 130 sqm

