



8/16 Post Office Street Carlingford, NSW



Spacious & Bright 3 Bedroom Apartment in Central Location

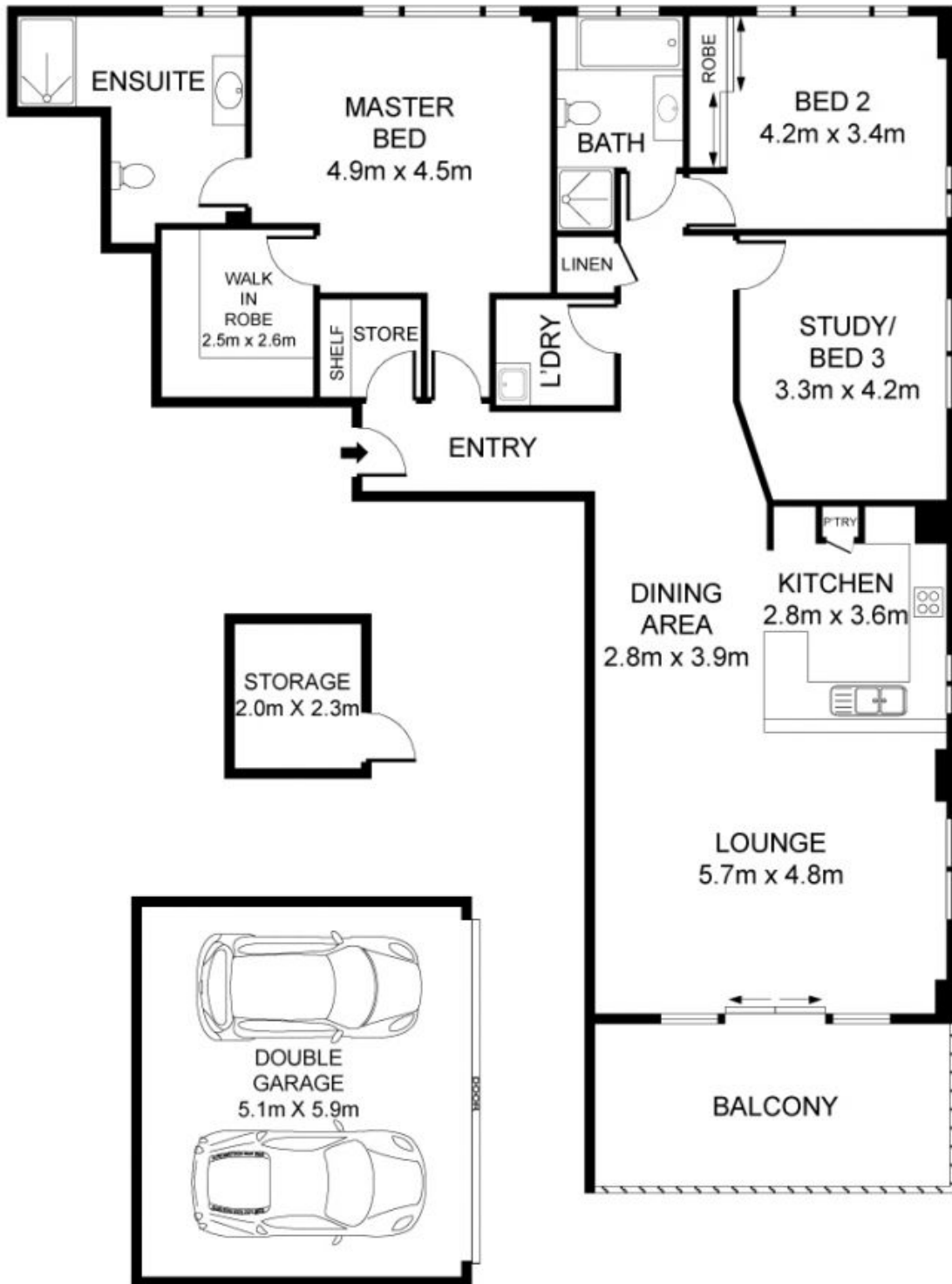
Positioned in the heart of Carlingford, this stunning north facing 3-bedroom apartment enjoys natural sunlight and convenient lifestyle. It is within short walk distance to Carlingford Village, Carlingford Court, Carlingford Public school, future light rail station and buses.

Price: Auction Guide: \$890,000
Council Rates: \$293.40 p/q
Water Rates: \$148.32 p/q



Juliet (Jiangmin) Chen

0408 997 997



8/16 Post Office Street, Carlingford

INTERNAL AREA: 143 SQM APPROX.



DISCLAIMER: 3D Property View accepts no liability for the accuracy of details contained within our floor plans. All plans are drawn and also checked to the best of our ability, however information contained in our floor plans such as area calculations are approximate, and have not been surveyed or drawn to scale. Our floor plans are for representational purposes only and should be used as such. Do not attempt to refer to our floor plans for structural or detailed information.