



19/29-35 Preston Avenue Engadine, NSW 2 1 1

Private Leafy Retreat

Enjoying a wonderful sense of privacy and a peaceful leafy outlook, this first-floor apartment offers comfortable, low-maintenance living in a highly convenient location. Just moments from Engadine town centre, cafes, transport and local parks, it's the perfect place to call home.

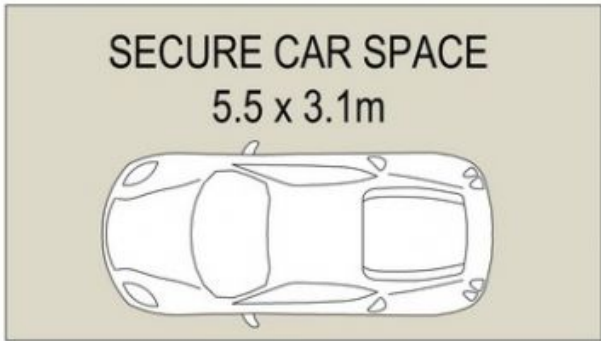
Price: \$670 per week
Bond: \$2,680
Available Date: 21/10/2025



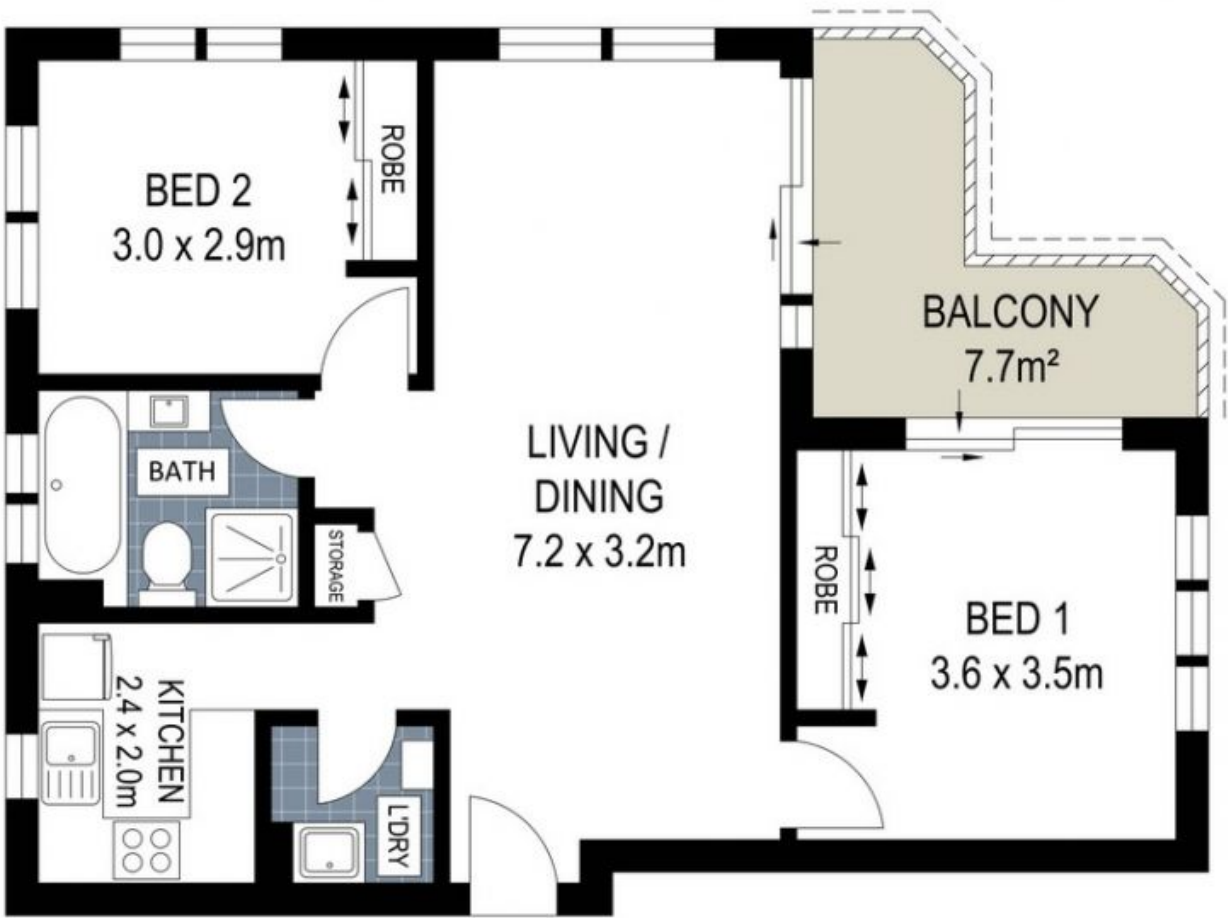
Saskia Roberts
0491 168 530



Georgia Rollason
02 9520 2296



BASEMENT



FIRST FLOOR

APPROXIMATE
INTERNAL : 75 m²
TOTAL AREA : 92 m²

