

25 Lasburn Crescent Carlingford, NSW

6

3

2

### Great Family Home with Carlingford West Public Catchment

Located in the high side of a peaceful street on approximate 1182 sqm large block, this well-maintained family home presents a leisure and convenient lifestyle. It is within walking distance to James Ruse Agricultural High school, also close to park, bus and shops. It offers spacious interior and outdoor entertaining.

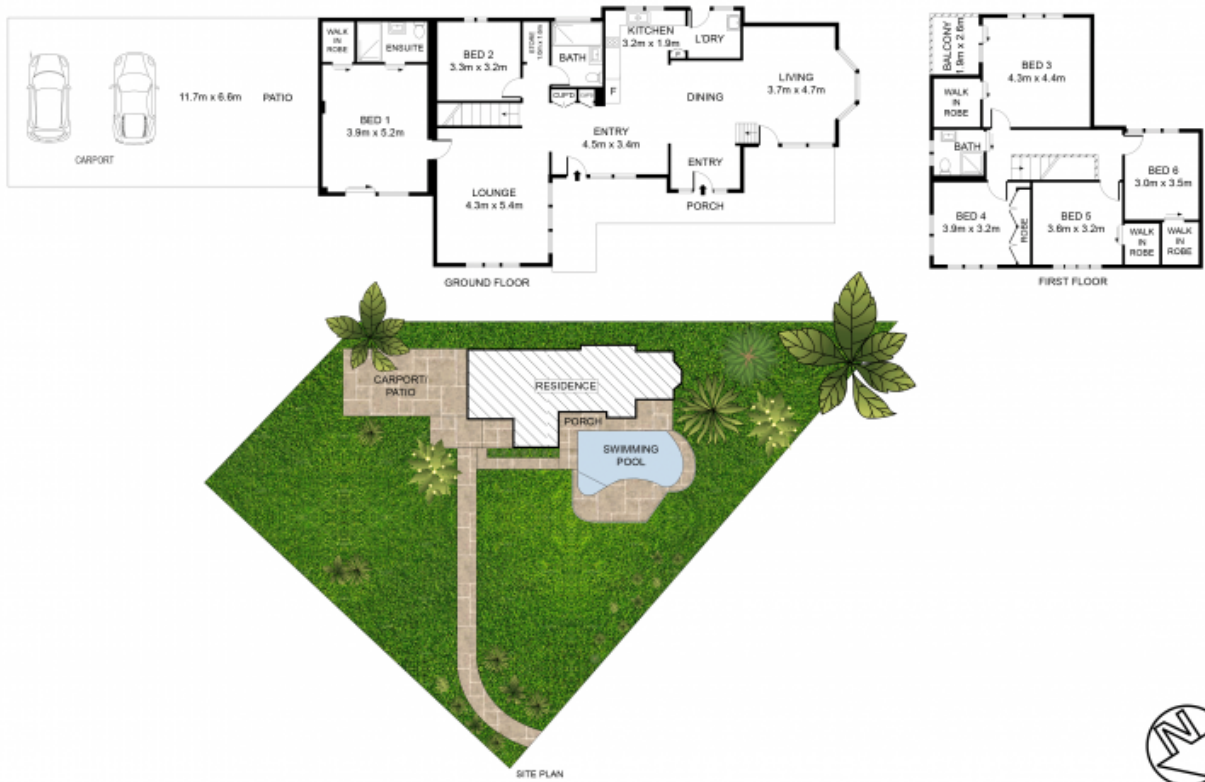
Price:

Contact Agent



**Juliet (Jiangmin) Chen**

0408 997 997



## 25 Lasburn Crescent, Carlingford

DISCLAIMER: 3D Property View accepts no liability for the accuracy of details contained within our floor plans. All plans are drawn and also checked to the best of our ability, however information contained in our floor plans such as area calculations are approximate, and have not been surveyed or drawn to scale. Our floor plans are for representational purposes only and should be used as such. Do not attempt to refer to our floor plans for structural or detailed information.