



30A Paul Street Dundas, NSW

5 2 1

Unique and Spacious Duplex

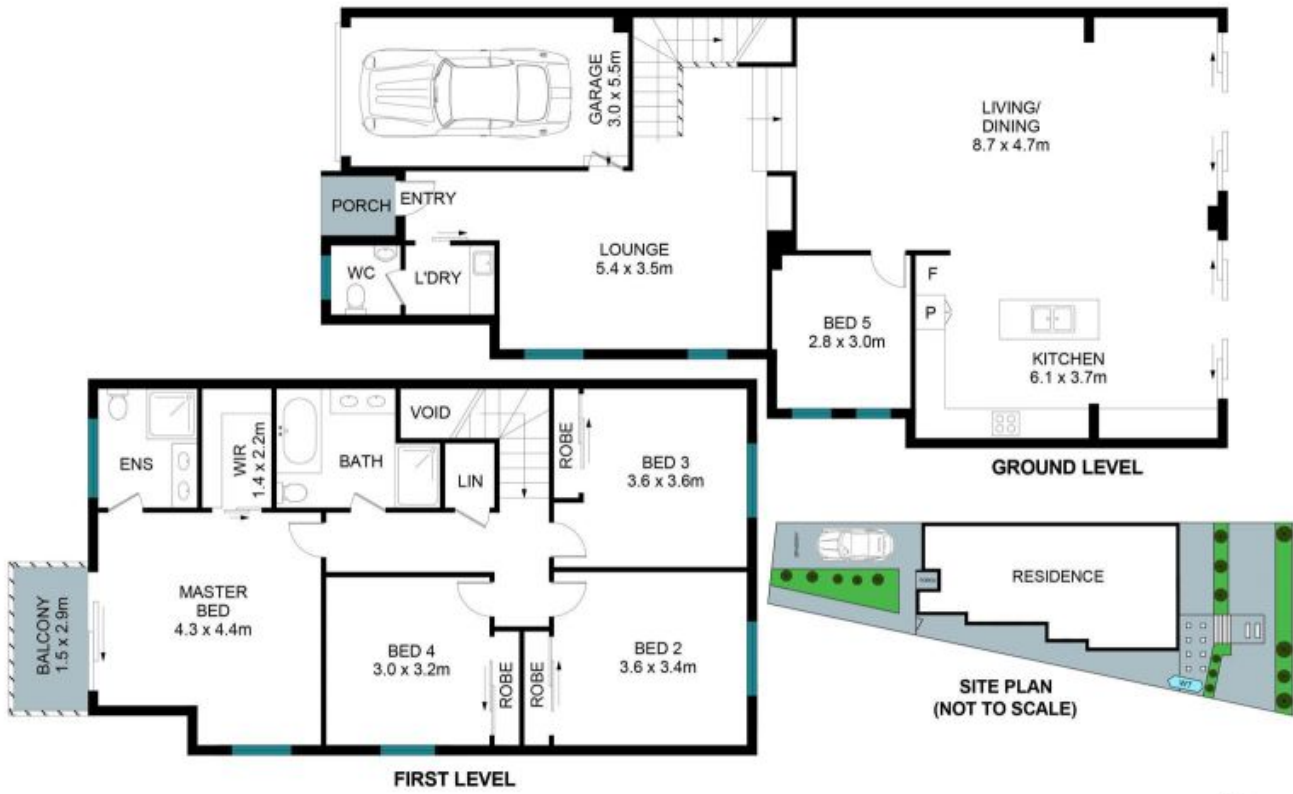
Positioned on the high side of a peaceful street, this beautiful duplex offers a comfortable and modern living style that is distinctly welcoming. It showcases a state-of-the-art unique design and exquisite finish close to St Patrick's Marist college, the Kings School and Tara Anglican School for Girls and James Ruse Agriculture High School.

Price: Contact Agent
Council Rates: \$358.00 p/q



Juliet (Jiangmin) Chen

0408 997 997



The floor plan is not to scale; measurements are indicative and in metres. Exterior elements are not in position. Plans should not be relied on. Interested parties should make and rely on their own enquiries.

30A Paul Street, Dundas

Internal Area Approx. - 216 sqm
 External Area Approx. - 6 sqm
 Land Area Approx. - 346.5 sqm

