



G05/239-243 Carlingford Road Carlingford, NSW



Huge 2-Bedroom Apartment in Central Location

Positioned in a popular location within walking distance to Carlingford Shopping Centre, Carlingford Village, schools and public transport is this huge 2-bedroom apartment with double car space. It's perfect for the first home buyer, downsizer or investor.

Price: Contact Agent

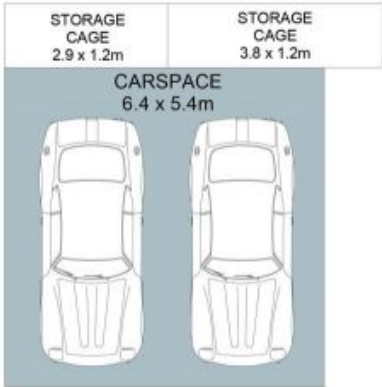
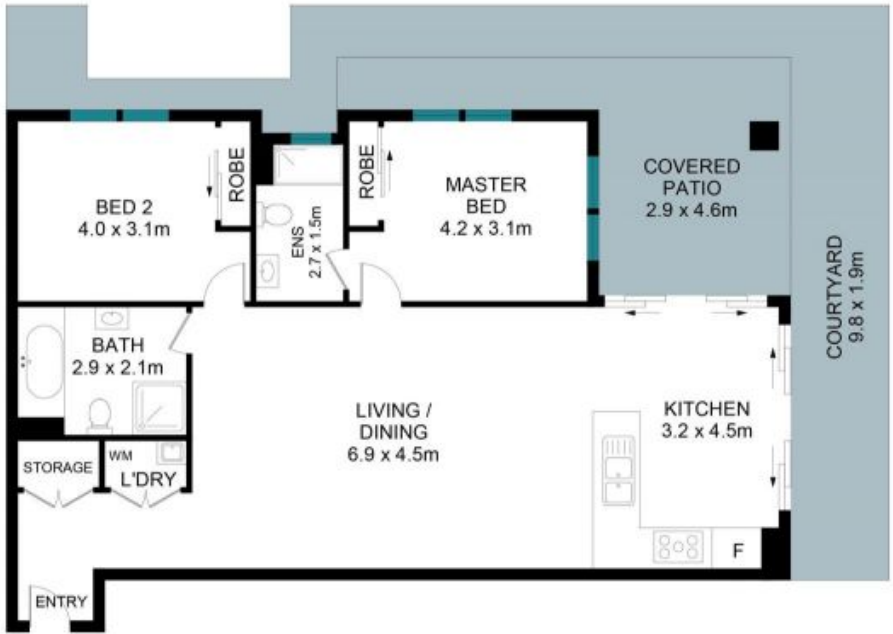
Council Rates: \$293.40 p/q

Water Rates: \$149.35 p/q



Juliet (Jiangmin) Chen

0408 997 997



The floor plan is not to scale; measurements are indicative and in metres. Exterior elements are not in position. Plans should not be relied on. Interested parties should make and rely on their own enquiries.

G05/239-243 Carlingford Road, Carlingford

Internal Area Approx. (incl. Balcony) - 132 sqm
 External Area Approx. - 37 sqm
 Total Area Approx. - 169 sqm

