



2/37-39 Doomben Avenue Eastwood, NSW



### Spacious Full Brick unit in central location

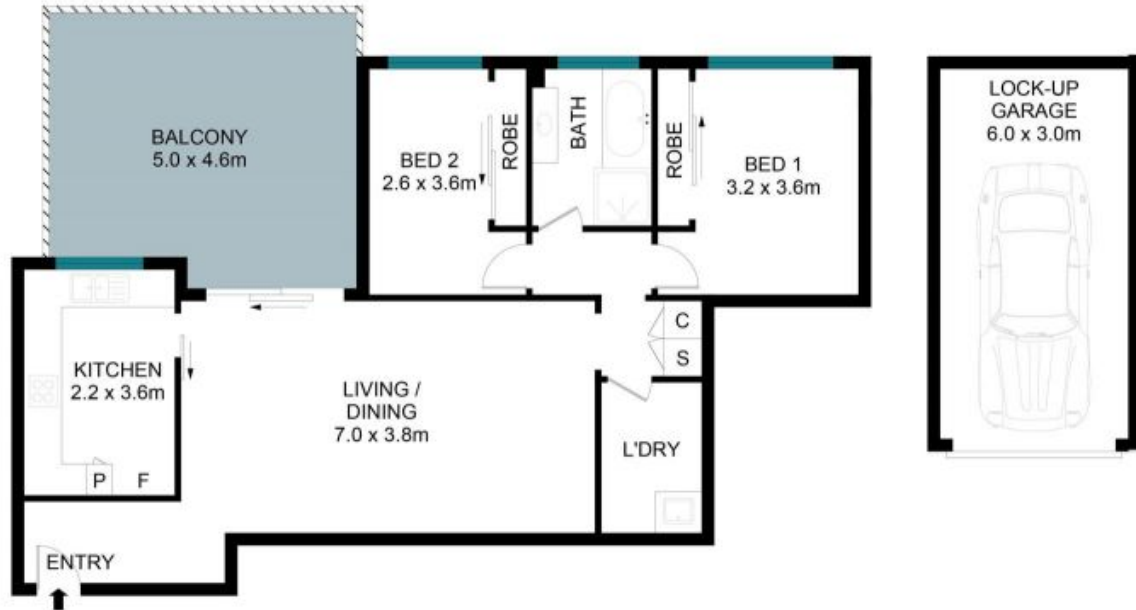
Maintained with care and boasting a desirable light and airy floor plan, this spacious and private home unit offers central Eastwood living to please. In an accessible ground-floor position, it offers a quality option for the young family or downsizer complete with pretty garden aspects through picture windows, an all-seasons balcony, and footstep proximity to schools, local shops and transport.

Price: \$650,000-\$710,000



**Juliet (Jiangmin) Chen**

0408 997 997



The floor plan is not to scale; measurements are indicative and in metres. Exterior elements are not in position. Plans should not be relied on. Interested parties should make and rely on their own enquiries.



2/37 Doomben Avenue, Eastwood

Internal: 97 sqm  
 Garage: 18 sqm  
 Total Size: 115 sqm

