



141 Bexley Road Earlwood, NSW

3 

1 

2 

Charming Period Home with Great Potential

This solid brick, period-style home presents an exceptional opportunity for renovators, first-home buyers, or savvy investors looking to unlock the full potential of a classic residence.

Price:

Sold \$1,456,000



George Karafotias

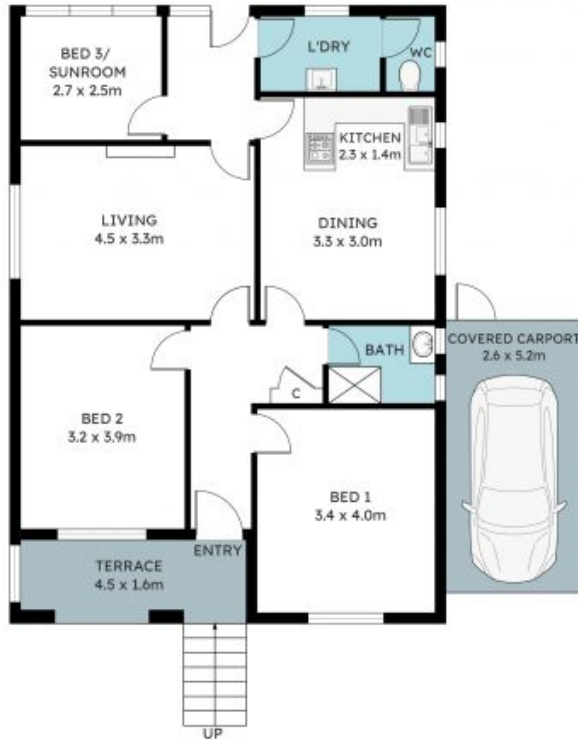
0405 436 336



Michael Alidenes

02 9558 0555

141 Bexley Road
Earlwood



The site plan and floor plan are not to scale; measurements are indicative and in metres. Plans should not be relied on. Interested parties should make and rely on their own enquiries. All other information provided has been collected from reliable sources but cannot be guaranteed for accuracy.