



G03/30 Cliff Road Epping, NSW

1 1 1

Near-New, Spacious 1-Bedroom Apartment in Central Location

Discover modern living in this near-new 1-bedroom apartment located in the central Epping area. This stylish residence boasts an array of features designed for comfort, convenience, and sophistication.

Price: Guide \$620,000 - \$648,000
Council Rates: \$303.00 p/q
Water Rates: \$239.00 p/q
Strata Rates: \$640.00 p/q



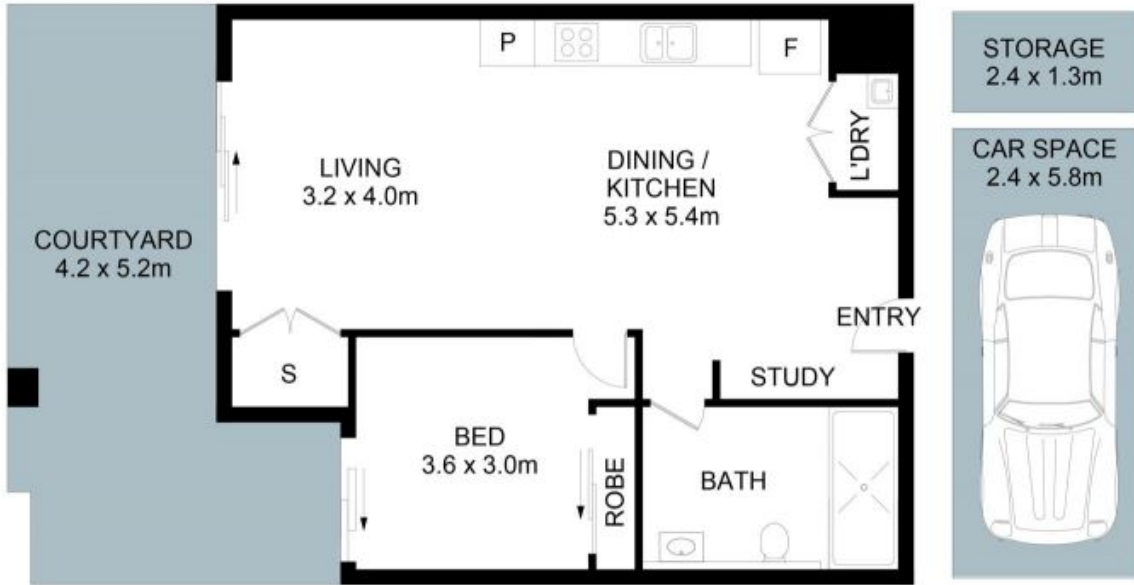
Juliet (Jiangmin) Chen

0408 997 997



Team Juliet

0466 907 733



The floor plan is not to scale; measurements are indicative and in metres. Exterior elements are not in position. Plans should not be relied on. Interested parties should make and rely on their own enquiries.



G3/30 Cliff Road, Epping

