



157A Midson Road Epping, NSW



Exquisite Family Home in Prime Location!

Welcome to a quiet and convenient home well back from the street, this good size family home effortlessly caters to comfort, flexibility and outdoor entertaining. It's set on 989sqm high side of the street.

Price:

Auction



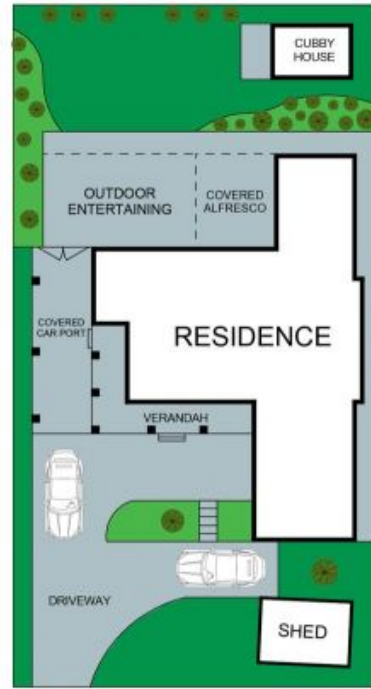
Juliet (Jiangmin) Chen

0408 997 997



Team Juliet

0466 907 733



SITE PLAN
(NOT TO SCALE)

The floor plan is not to scale; measurements are indicative and in metres. Exterior elements are not in position. Plans should not be relied on. Interested parties should make and rely on their own enquiries.



157A Midson Road, Epping

