



13/23-35 Crane Road Castle Hill, NSW 3 2 2

Spacious 3-Bedroom Apartment in Castle Hill CBD

Introducing you to this exceptional, massive-sized 3-bedroom apartment in the heart of Castle Hill! Enjoy easy access to a myriad of amenities right at your doorstep. From shopping centre and dining options to recreational facilities, everything you need is just moments away. It offers a perfect blend of modern comfort and unbeatable convenience, making it ideally suited for busy professionals, downsizers, and growing families.

Features:

- 3 generous-sized bedrooms, with the master bedroom featuring an ensuite and a built-in wardrobe.
- Modern kitchen offering a gas cooktop and ample cupboard space.
- The open layout ensures that the kitchen flows effortlessly into the dining and living areas, creating a harmonious space for family gatherings.
- Ballroom-sized living area offers flexibility.
- Step beyond the glass doors and embrace the outdoor area, and a private courtyard.
- Zoned for Castle Hill Public School and Castle Hill High School.
- Security car park with ample visitor parking.

Price: Contact Agent
Water Rates: \$171.00 p/q
Strata Rates: \$2,337.00 p/q



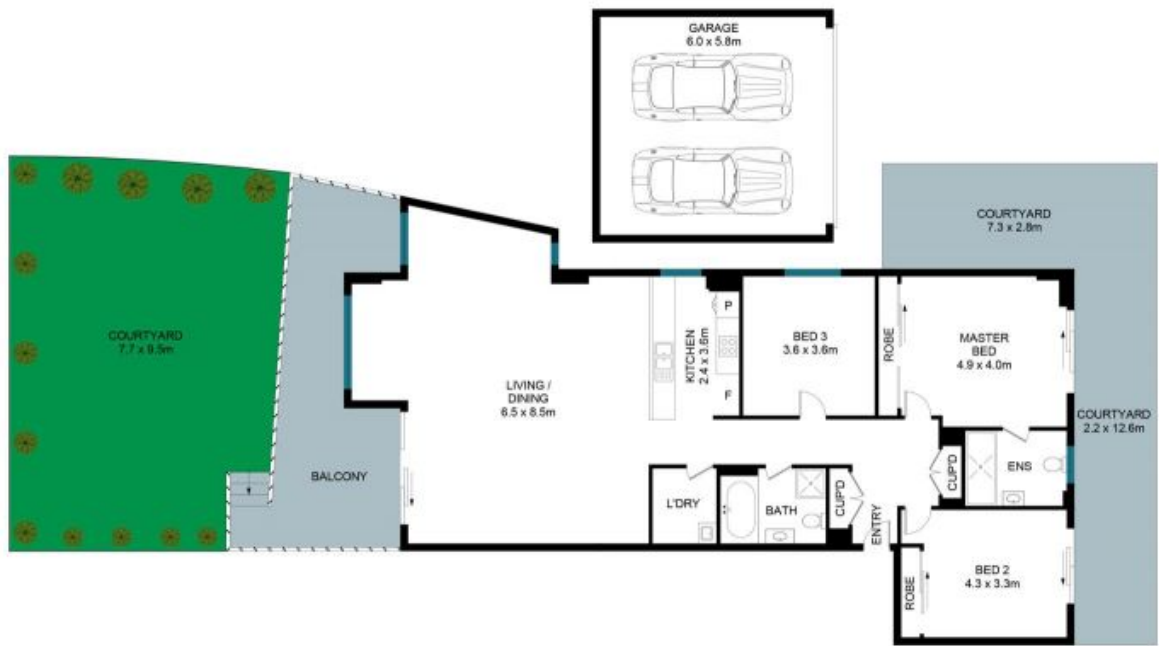
Juliet (Jiangmin) Chen

0408 997 997



Team Juliet

0466 907 733



The floor plan is not to scale; measurements are indicative and in metres. Exterior elements are not in position. Plans should not be relied on. Interested parties should make and rely on their own enquiries.

13/23-35 Crane Road, Castle Hill



STONE