

220/132 Killeaton Street St Ives, NSW



**Luxurious two-bedroom apartment in ideally convenient location**

Enjoying an elevated north facing position overlooking beautifully kept gardens, this apartment is well-appointed within the renowned 'Alcove' development. With spacious open-plan living, exquisite indoor-outdoor entertaining, and access to a pool, spa, and fully equipped gym.

**Price:** Deposit Taken  
**Available Date:** 05/11/2025



**Sylvia Van Wyk**

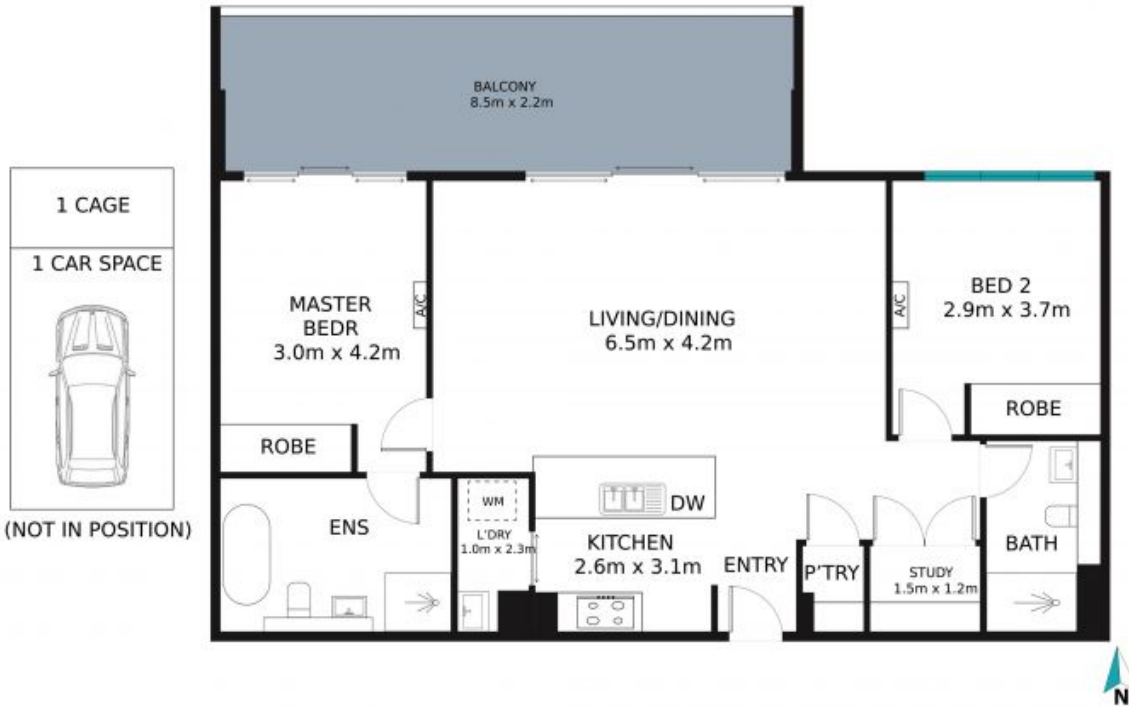
0404 454 465



**Ivy Wang**

0421 244 475

Unit 220/132 Killeaton Street,  
Street. Ives



The site plan and floor plan are not to scale; measurements are indicative and in meters. Bushes and trees are placed for illustration purposes. Plans should not be relied on. Interested parties should make and rely on their own enquire. All other information provided has been collected from reliable sources but cannot be guaranteed for accuracy.