

29 Hermington Street Epping, NSW

5

3

1

### Spacious & Stunning Family Home in Great Location

Discover the perfect family haven sitting on a huge almost level 575.7sqm, ideally situated in the heart of Epping West. This exceptional family home offers unparalleled convenience and comfort, ensuring a superb lifestyle for you and your loved ones.

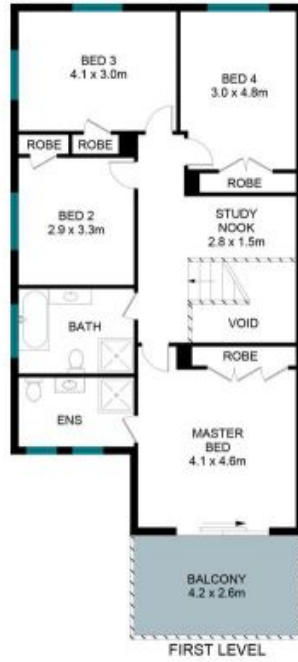
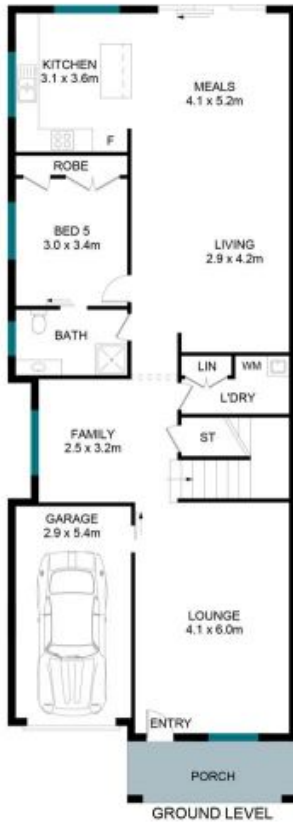
Price:

Contact Agent



**Juliet (Jiangmin) Chen**

0408 997 997



The floor plan is not to scale; measurements are indicative and in metres. Exterior elements are not in position. Plans should not be relied on. Interested parties should make and rely on their own enquiries.

29 Hermington Street, Epping

