



2/165 Carlingford Road Epping, NSW

3 2 2

Full Brick Townhouse with Epping West Public School Catchment

Nestled in the heart of Epping, this stunning triple-level townhouse offers the epitome of modern living in a highly coveted location. Designed to elevate your lifestyle, this exceptional home is within the prestigious school zones of Epping West Public School, Cheltenham Girls, and Carlingford High School, ensuring top-tier education for your children.

Price: Sold by Juliet Chen 0408 997 997
Council Rates: \$316.00 p/q
Strata Rates: \$787.00 p/q



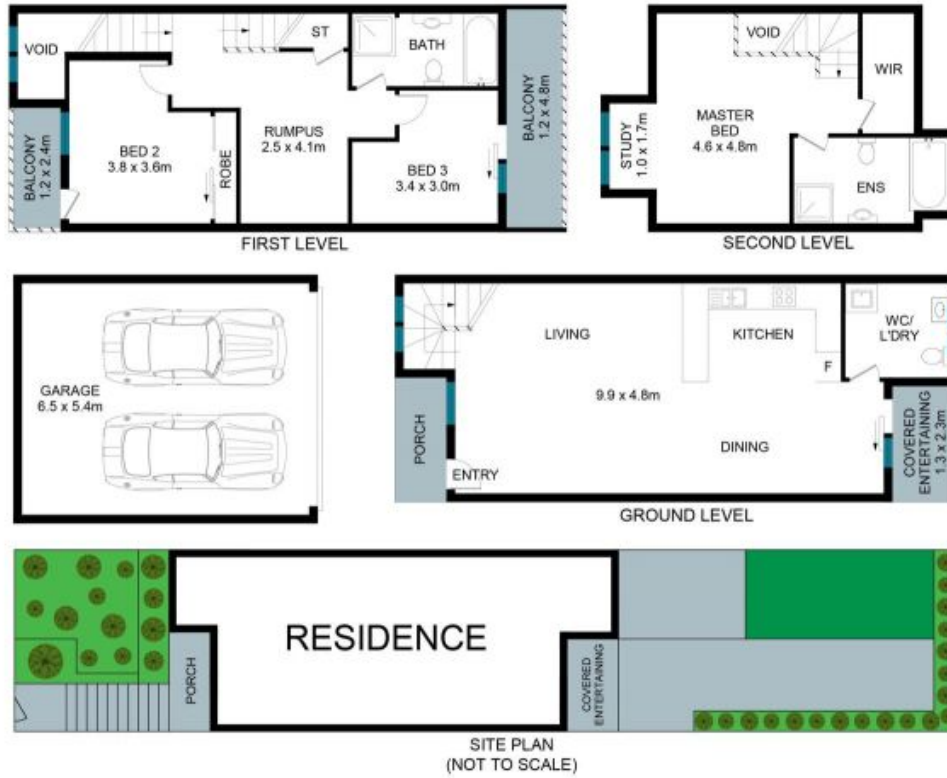
Juliet (Jiangmin) Chen

0408 997 997



Team Juliet

0466 907 733



The floor plan is not to scale; measurements are indicative and in metres. Exterior elements are not in position. Plans should not be relied on. Interested parties should make and rely on their own enquiries.

2/165 Carlingford Road, Epping



STONE