



SOLD

 Juliet Chen
 0408 997 997

 Mary Song
 0470 227 775



C239/2 Gerbera Place Kellyville, NSW

1 1 1

Charming 1-Bed Plus Huge Study Apartment

Looking for a stylish and low-maintenance home in one of Kellyville's most sought-after locations? Look no further! This modern 1-bed plus study, 1-bathroom apartment with 1 car space offers the perfect blend of convenience and comfort.

Price: Contact Agent
Council Rates: \$279.00 p/q
Water Rates: \$169.03 p/q
Strata Rates: \$960.75 p/q



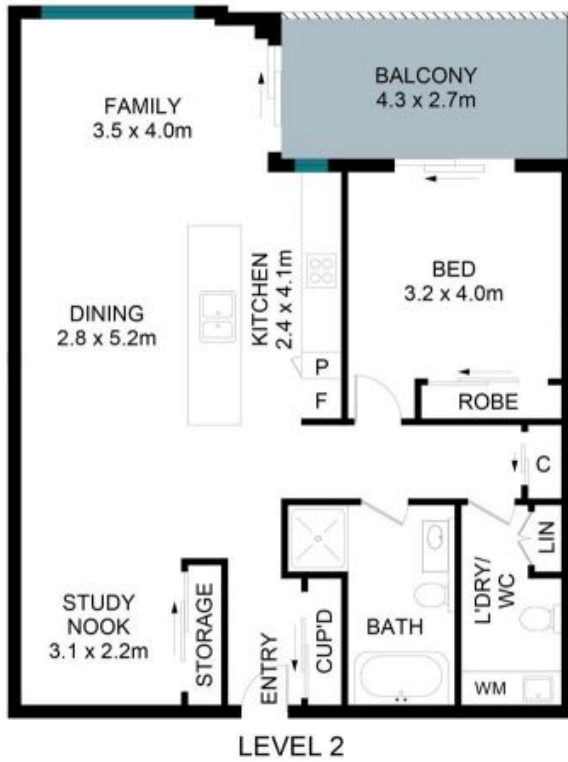
Juliet (Jiangmin) Chen

0408 997 997



Mary Song

0470 227 775



The floor plan is not to scale; measurements are indicative and in metres. Exterior elements are not in position. Plans should not be relied on. Interested parties should make and rely on their own enquiries.

239/2 Gerbera Place, Kellyville

