



SOLD
 Juliet Chen
 0408 997 997




1/130 Crimea Road Marsfield, NSW 3  1  2 

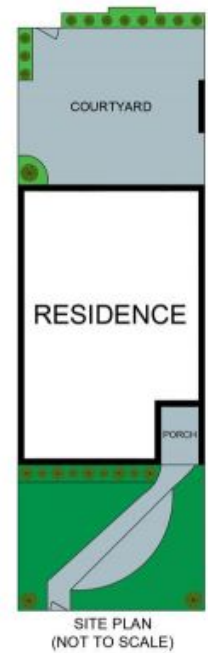
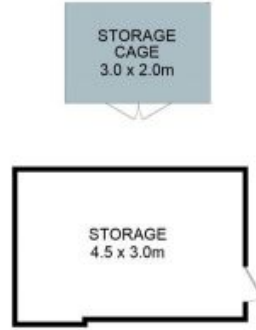
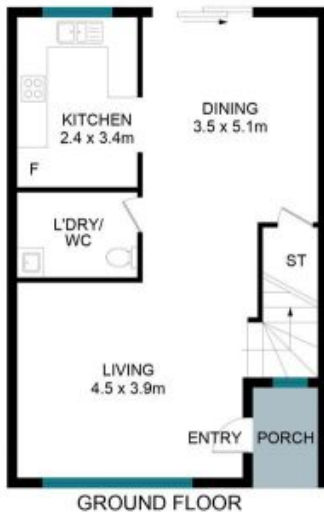
Spacious 3-bedroom Townhouse in Popular Location

This beautiful light filled full brick townhouse offers a wonderful opportunity for those seeking comfort, space, and easy access to the best of the area. This well-presented 3-bedroom townhouse is ideal for families, first-time buyers, or investors.

Price: Contact Agent
Council Rates: \$366.20 p/q
Water Rates: \$172.79 p/q
Strata Rates: \$1,624.25 p/q



Juliet (Jiangmin) Chen
 0408 997 997



The floor plan is not to scale; measurements are indicative and in metres. Exterior elements are not in position. Plans should not be relied on. Interested parties should make and rely on their own enquiries.

1/130 Crimea Road, Marsfield

