



326 The Parkway Bradbury, NSW 4 2 1

### Immaculate family home opposite Parkland

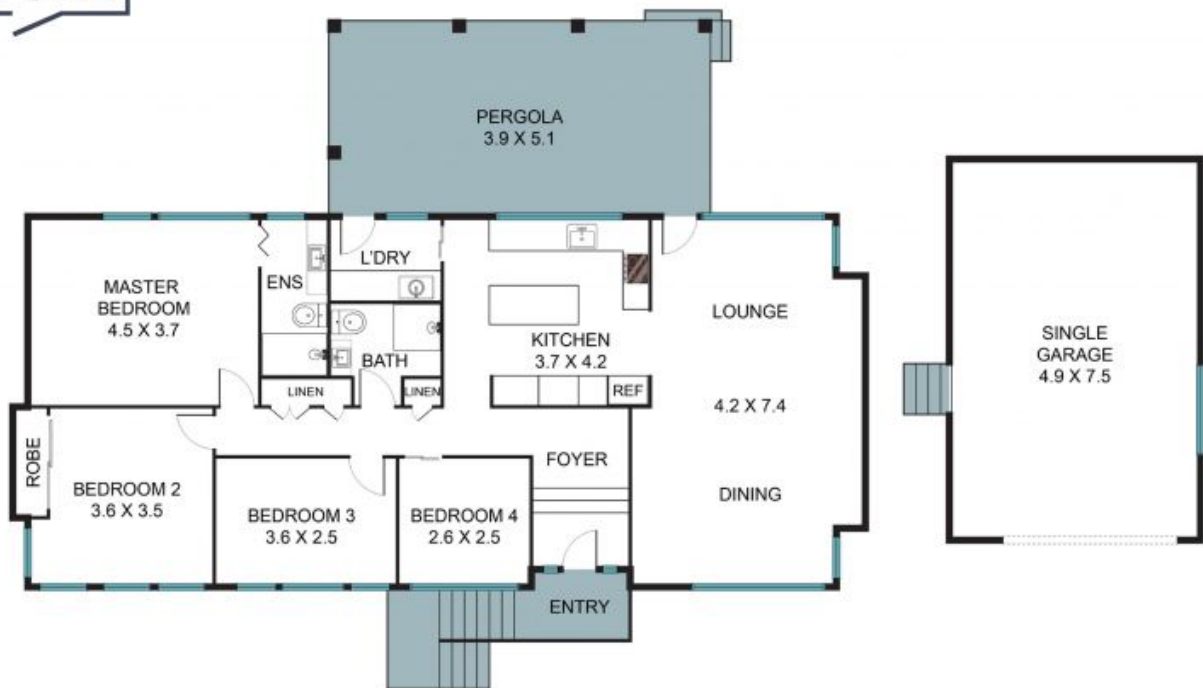
Beautifully maintained four-bedroom home on a generous 632m<sup>2</sup> block, perfectly positioned in a sought-after Macarthur pocket opposite parkland. Enjoy a peaceful, family-friendly setting close to schools, Campbelltown Hospital, Macarthur Square, public transport, and all local amenities.

**Price:** \$750 per week  
**Bond:** \$3,000  
**Available Date:** 04/11/2025



**Leasing Department**  
0481064443  
**Stone Macarthur**

**STONE**



## 326 The Pkwy, Bradbury NSW 2560



The floor plan is not to scale, measurements are in metres. Exterior elements are not in position. Plans should not be relied on. Interested parties should make and rely on their own enquiries. All other information provided has been collected from reliable sources but cannot be guaranteed for accuracy.