



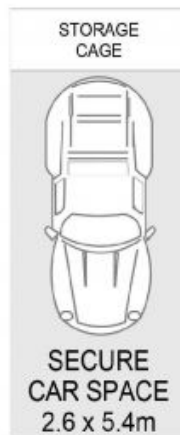
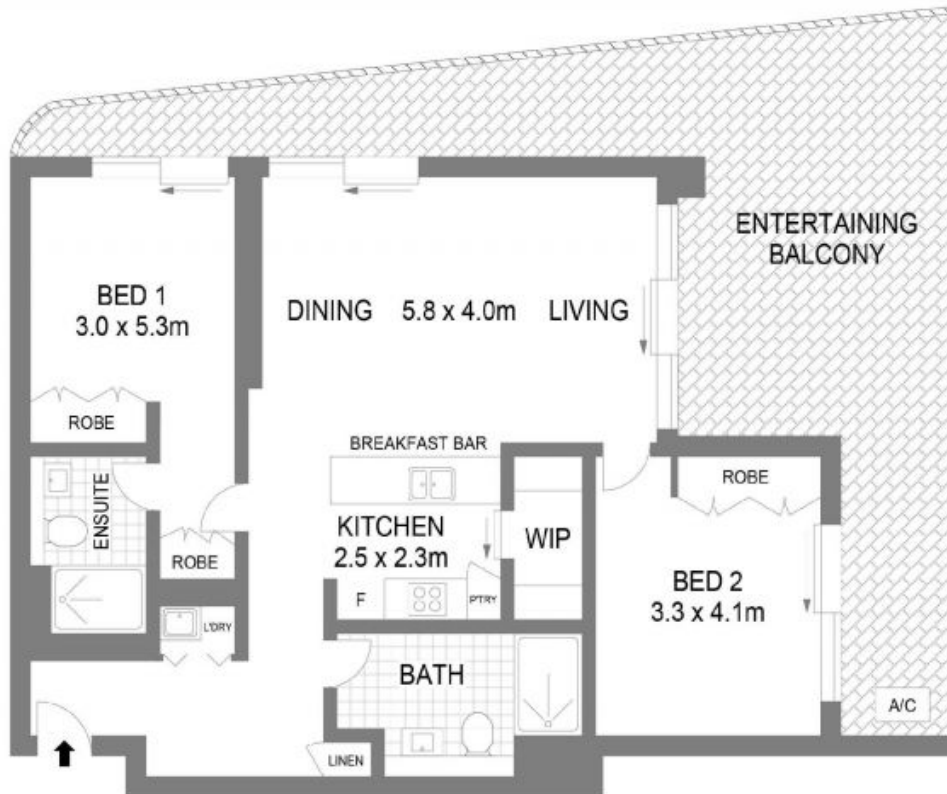
107/9 Wyuna Street Beverley Park, NSW 2  2  1 

Contemporary Parkside Living with Superb Style

Positioned in a quiet and convenient Beverley Park location, this contemporary apartment combines modern design with low-maintenance living. The open-plan layout creates a seamless connection between the living space and a large covered balcony, ideal for year-round enjoyment. A well-appointed gas kitchen with a stone island bench anchors the home, complemented by quality finishes and ducted air-conditioning for complete comfort. Secure building access, basement parking, and a shared rooftop terrace with BBQ facilities further enhance the appeal, all within easy reach of local shops, parks, and transport.

Price: SOLD | Liam Roukis
Council Rates: \$429.00 p/q
Water Rates: \$172.83 p/q
Strata Rates: \$1,049.30 p/q

Liam Roukis
 0413 702 640



107/9 Wyuna Street

Beverley Park

Scale in metres.
Indicative only. All information contained herein is obtained from sources we believe to be accurate.
We cannot guarantee its accuracy. Interested persons should make their own enquiries.