

STONE



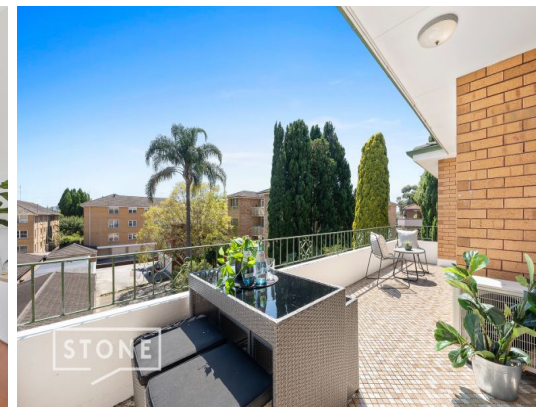
STONE



STONE



STONE



STONE

12/5 Chester Street Epping, NSW

3  2  1 

### Rare Spacious and Solid Three Bedder

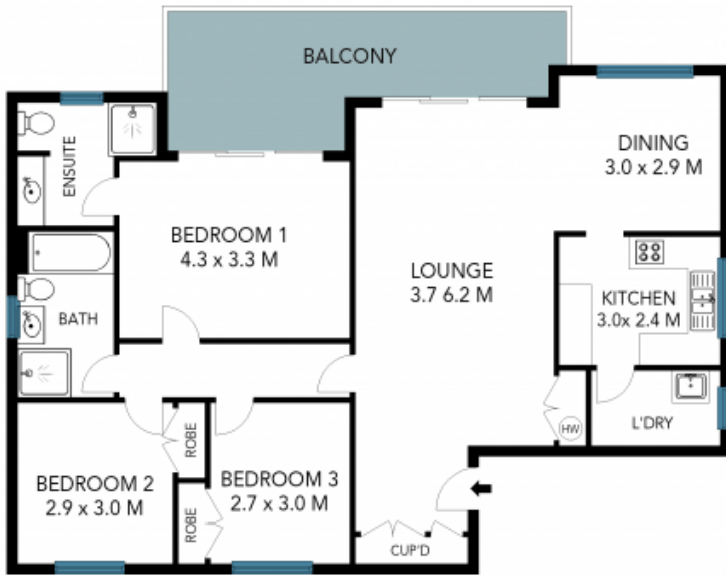
Nestled on the top floor with district views, this oversized, full-brick three-bedroom unit is a pleasant stroll from Epping's impressive lifestyle hub of retail amenities, cafes, and transport, fusing comfort and convenience. Its large 144.5sqm floor plan features a sizeable north facing balcony, privacy of only one short common wall, open plan yet separate living and dining areas and renovated bathrooms. Located in a family friendly precinct, it is zoned for Epping Public, Cheltenham Girls, Epping Boys, and Carlingford High.

**Price:** Sold \$908,000  
**Council Rates:** \$304.00 p/q  
**Water Rates:** \$167.00 p/q  
**Strata Rates:** \$1,269.00 p/q

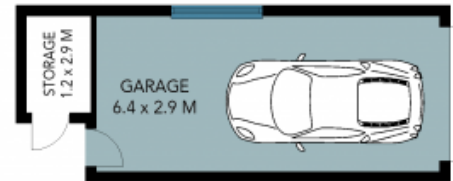


**Vincent Goh**

0412 316 797



THIRD FLOOR



GROUND FLOOR



The site plan and floor plan are not to scale; measurements are indicative and in metres. Bushes and trees are placed for illustration purposes. Plans should not be relied on. Interested parties should make and rely on their own enquiries. All other information provided has been collected from reliable sources but cannot be guaranteed for accuracy.