



7 Holburn Crescent KINGS LANGLEY, NSW



**Put Your Family First Suit Caravan or Boating Enthusiasts!**

Lifestyle: Sitting in an elevated position with impressive street presence, this much loved family home is nestled in a peaceful suburban street. Beautifully landscaped and featuring an in-ground pool, the home boasts a versatile floorplan designed over two levels. It is located nearby local schools and is a short walk to the sporting reserve and bus stop.

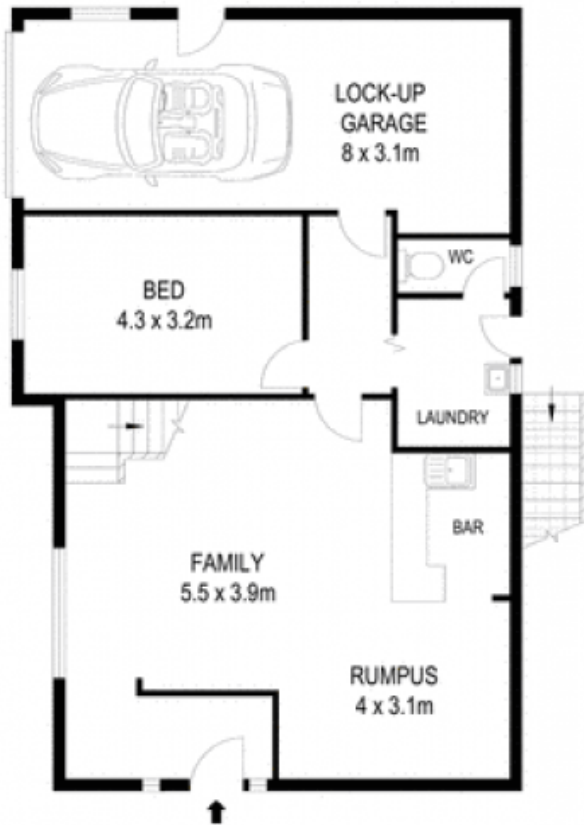
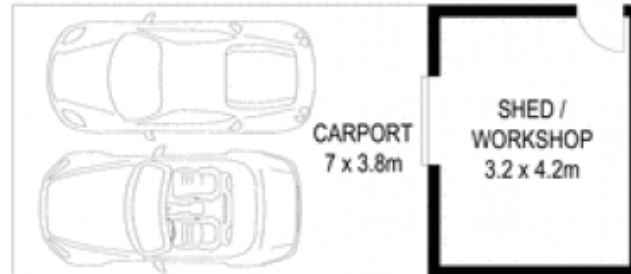
Price: \$850,000

**Stone Beecroft | Castle**

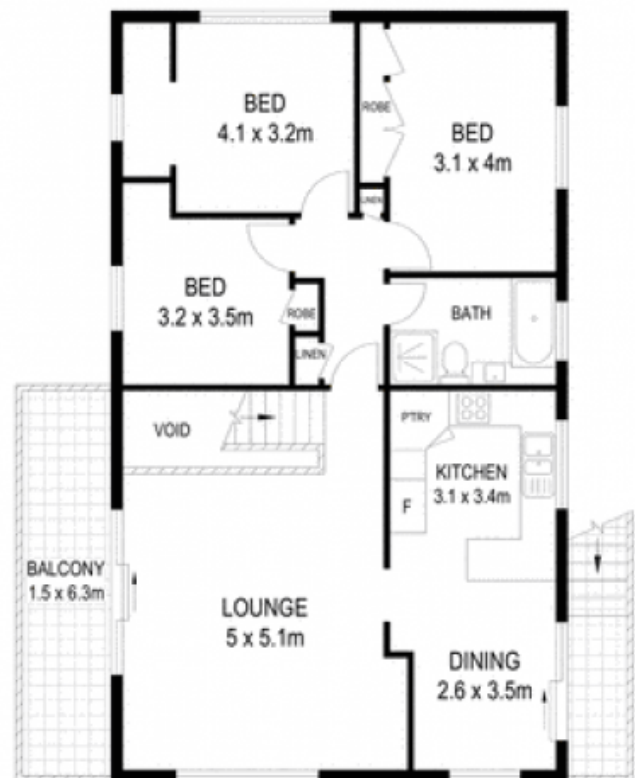
02 8866 1500

**Hill | Epping**

# 7 Holburn Crescent, Kings Langley



**Entry Level**



**Level One**

DISCLAIMER  
DIMENSIONS ARE APPROXIMATE AND SHOULD ONLY BE USED AS A GUIDE.  
THEY ARE NOT TO SCALE AND NO LIABILITY WILL BE ACCEPTED.

