



16/1-3 Sherwin Avenue CASTLE HILL, NSW



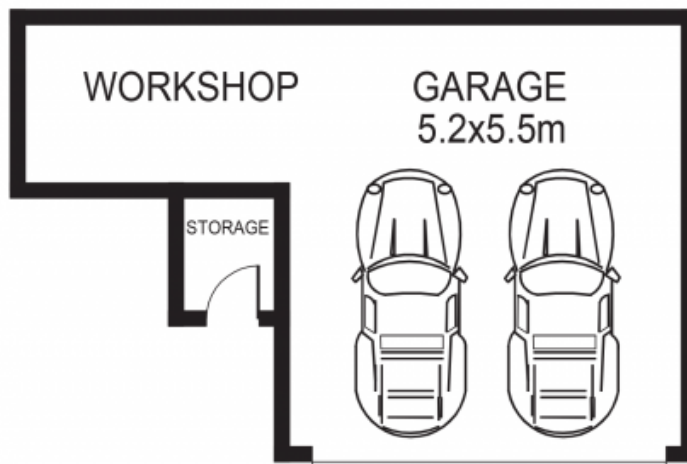
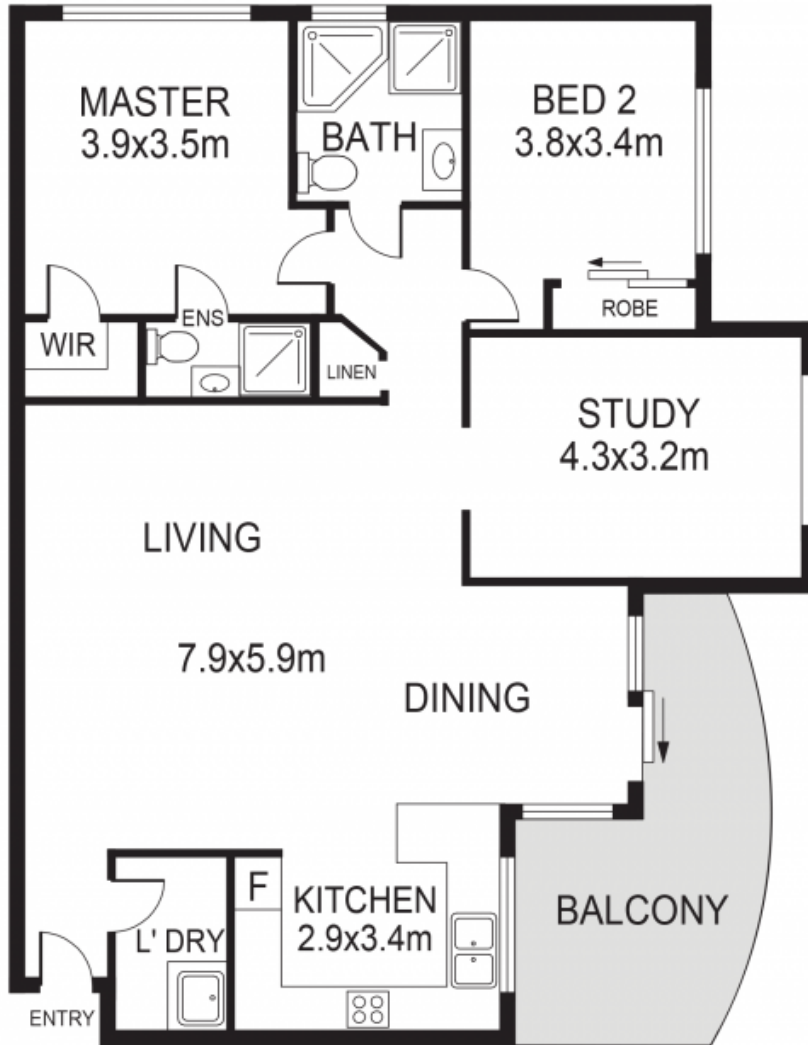
Spacious Super Convenient Living

Lifestyle: With everything you desire for comfortable and convenient living, this generously sized open-plan apartment would suit young families, couples and investors alike, with its generous combined lounge and dining room plus a separate large study, library or formal dining room. Finished in neutral contemporary tones with recently updated carpet and paint, this bright and spacious unit is so perfectly located just minutes' walk to everything Castle Hill has to offer including; buses, future rail, schools, Castle Towers shops, dining and recreation facilities.

Price: \$840,000

Stone Beecroft | Castle

02 8866 1500
Hill | Epping



16/1-3 SHERWIN AVENUE, CASTLE HILL

DISCLAIMER:

PLANS SHOWN ARE FOR MARKETING PURPOSES ONLY, ALL DIMENSIONS ARE APPROXIMATE AND NOT TO SCALE. THEY ARE SUBJECT TO ERRORS AND INACCURACIES AND NO LIABILITY WILL BE ACCEPTED. INTERESTED PARTIES SHOULD MAKE THEIR OWN INQUIRES.

