

57/10 Merriville Road KELLYVILLE RIDGE, NSW



Sold - call (02) 9634 1111 for more information!

Lifestyle: This trendy apartment located on a coveted corner position, within a premium apartment complex is finished with a sleek ultra-contemporary finish. Enjoy convenient lift access from your security car space and instantly appreciate the inviting space and light of this surprisingly proportioned open-plan apartment with high ceilings throughout. For the warmer months enjoy two sun filled balconies flowing out from the ample living area adjacent to the meals and kitchen. So conveniently located near; Rouse Hill Town Centre, Local Shops, Medical Centre, Kellyville Ridge Public School, John XXIII Catholic Primary School, Local Parks, Bus Stops and future rail.

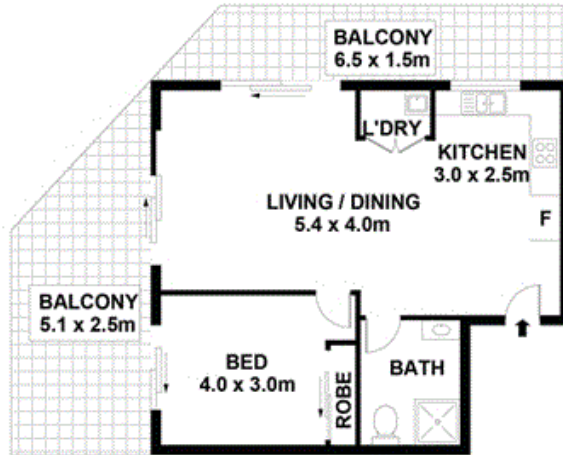
Price:

SOLD BY SAM OUTCH - 0450 303 065

Stone Beecroft | Castle

02 8866 1500

Hill | Epping



LEVEL 2

57/10 Merriville Road Kellyville Ridge



DISCLAIMER
DIMENSIONS ARE APPROXIMATE AND SHOULD ONLY BE USED AS A GUIDE
THEY ARE NOT TO SCALE AND NO LIABILITY WILL BE ACCEPTED

