

69/23 Regent Honeyeater Grove Kellyville, NSW



**Excellent entertainer**

A sophisticated luxurious oversized ground floor apartment, enjoy contemporary living at its finest with spacious light filled living with two generous sized bedrooms, master with outfitted walk in wardrobe and modern ensuite . Versatile separate home office/ study with ample storage. Kitchen with quality stainless steel appliances gas cooking, dishwasher and feature stone benchtops. Wonderful sunlit living and dining follows out to an expansive entertaining balcony with district views.

**Price:** \$785,000



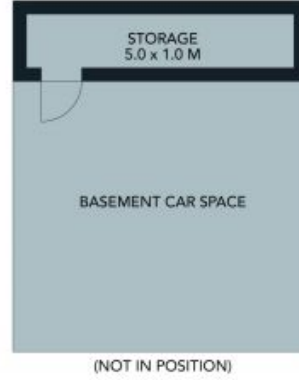
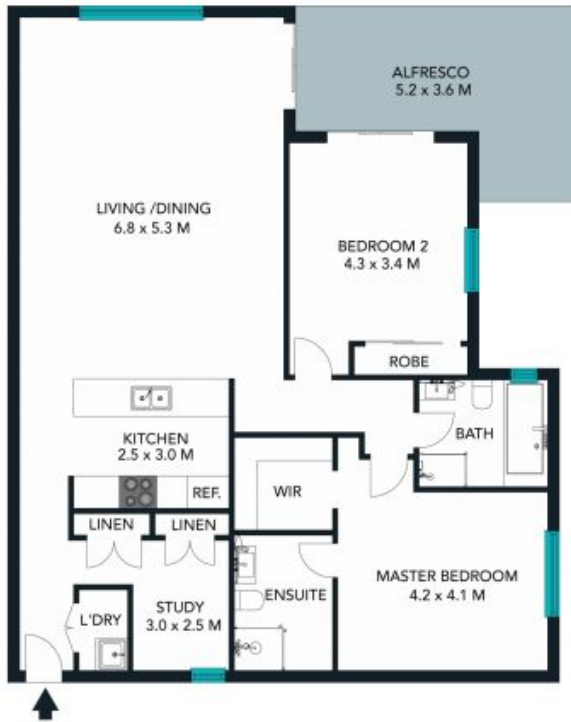
**Jane Booty**

0412 207 452



**Viviane Mylott**

0438 983 615



TOTAL SQM ON TITLE : 196 SQM

The floor plan is not to scale; measurements are indicative and in metres. Exterior elements are not in position. Plans should not be relied on. Interested parties should make and rely on their own enquiries.



69/23 Regent Honeyeater Grove, Kellyville  
 stonerealestate.com.au

Produced by DIAKRIT



The floor plan is not to scale; measurements are indicative and in metres. All features included in this 3D plan are for inspiration purposes only. This is not an exact replica of the property or the position of exterior elements. Plans should not be relied on. Interested parties should make and rely on their own enquiries.

69/23 Regent Honeyeater Grove, Kellyville  
stonerealestate.com.au

Produced by DIAKRIT