



15 Cadman Avenue Castle Hill, NSW

3  3  1 

Huge character home in Castle Hill with utilities included

This unique home offers plenty of space for your family. With a private in-ground pool and an over-sized workshop in the garage, you'll never be stuck for something to do.

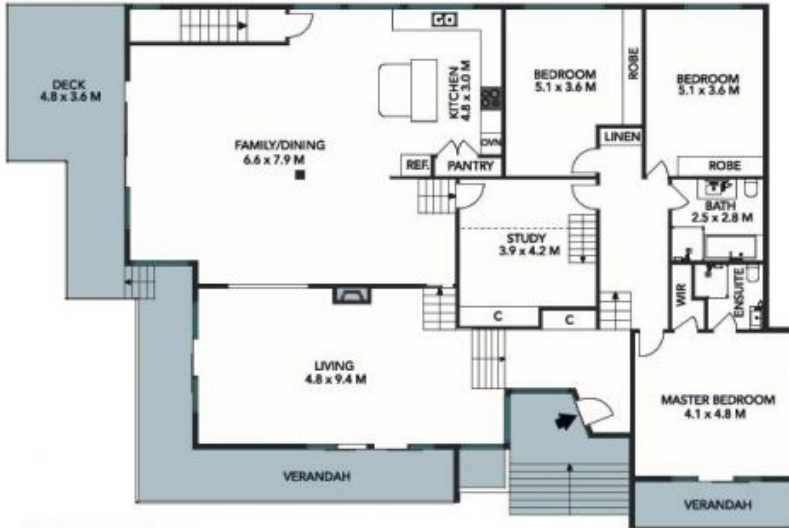
Price: \$850 per week

Available Date: 12/11/2022

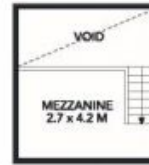


Eliza Zammit

02 8893 2220



GROUND FLOOR



MEZZANINE FLOOR



LOWER GROUND FLOOR

TOTAL LAND AREA : 940 SQM
 TOTAL LIVING AREA : 334 SQM

The floor plan is not to scale; measurements are indicative and in metres. Exterior elements are not in position. Plans should not be relied on. Interested parties should make and rely on their own enquiries.



Produced by DIAKRIT



GROUND FLOOR



MEZZANINE FLOOR



LOWER GROUND FLOOR



The floor plan is not to scale, measurements are indicative and in meters. All features included in this 3D plan are for inspiration purposes only. This is not an exact replica of the property or the position of exterior elements. Plans should not be relied on. Interested parties should make and rely on their own enquiries.

Produced by DIAKRIT