



5/23 Regent Honeyeater Grove North Kellyville, NSW



Ground floor luxury

**Price:** Contact Agent  
**Council Rates:** \$258.00 p/q  
**Water Rates:** \$286.69 p/q  
**Strata Rates:** \$1,179.10 p/q



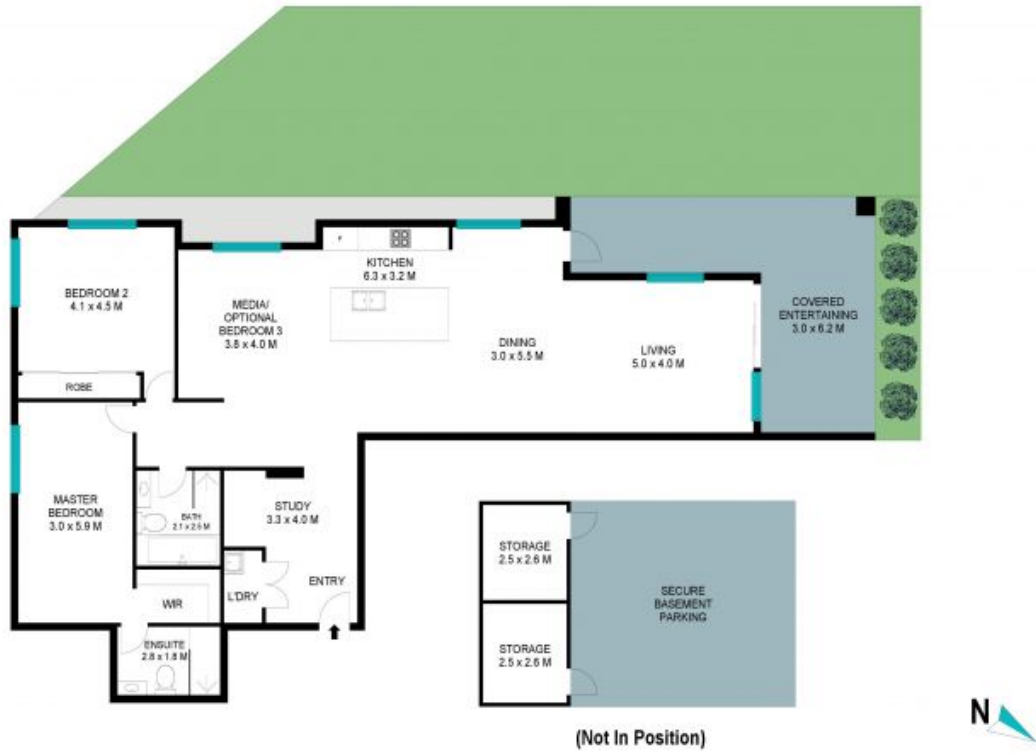
**Viviane Mylott**

0438 983 615



**Jane Booty**

0412 207 452



(Not In Position)

The site plan and floor plan are not to scale; measurements are indicative and in metres. Bushes and trees are placed for illustration purposes. Plans should not be relied on. Interested parties should make and rely on their own enquiries. All other information provided has been collected from reliable sources but cannot be guaranteed for accuracy.