



26 Laughton Crescent Kellyville, NSW



SOLD by Jane Booty & Viv Mylott

An exquisite family home positioned in a peaceful cul de sac, in one of the most prestigious pockets of Kellyville, bordering Bella Vista and Norwest. Offering an effortless lifestyle with flowing indoor and outdoor living zones and an ultra-spacious floor plan over 2 levels of luxury resort style living.

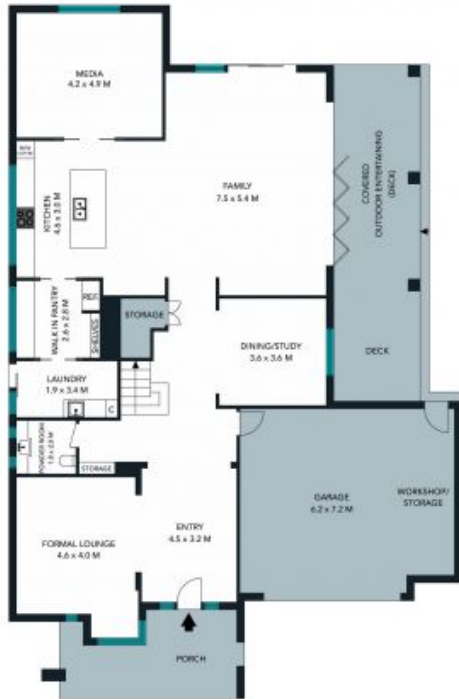
Price: \$1,950,000
Council Rates: \$422.00 p/q
Water Rates: \$170.00 p/q



Jane Booty
 0412 207 452



Viviane Mylott
 0438 983 615



GROUND FLOOR



FIRST FLOOR



SITE PLAN

The site plan and floor plan are not to scale, measurements are indicative and in meters. Boxes and lines are placed for illustration purposes. Plans should not be relied on. Interested parties should make and rely on their own enquiries. All other information provided has been collected from reliable sources but cannot be guaranteed for accuracy.



GROUND FLOOR



FIRST FLOOR

The floor plan is not to scale; measurements are indicative and in metres. All features included in this 3D plan are for inspiration purposes only. This is not an exact replica of the property or the position of exterior elements. Plans should not be relied on. Interested parties should make and rely on their own enquiries.

26 Laughton Crescent, Kellyville



STONE