



15 Avonleigh Way West Pennant Hills, NSW

6

3

5

Palatial lifestyle property amid Grosvenor Estate

A tour de force in scale and showstopping grandeur, this majestic masterpiece elevates large-scale entertaining to impressive new heights. Proudly seated amid other prominent homes in one of the area's finest cul-de-sacs, it boasts 830sqm of sun-kissed living atop 1,144sqm grounds, tree-studded greenery at every turn, and Coonara Village an easy 400m walk and Metro links within a mere 700m stroll.

Price: Sold at auction by Graham Black 0400 381

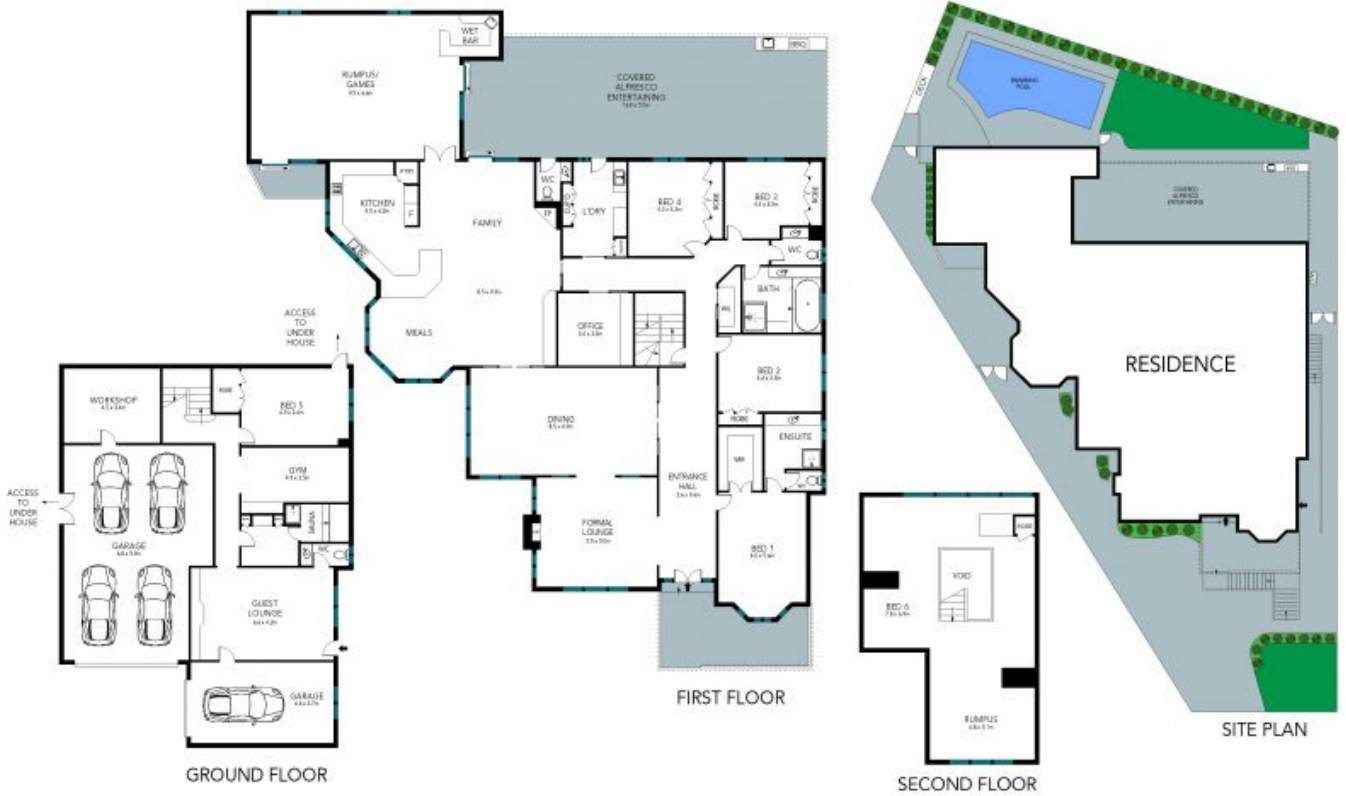
Council Rates: ~~2436.44~~ 2436.44 p/q

Water Rates: \$145.71 p/q



Graham Black

0400 381 217



The floor plan is not to scale; measurements are indicative and in metres. Exterior elements are not in position. Plans should not be relied on. Interested parties should make and rely on their own enquiries.

15 Avonleigh Way, West Pennant Hills

