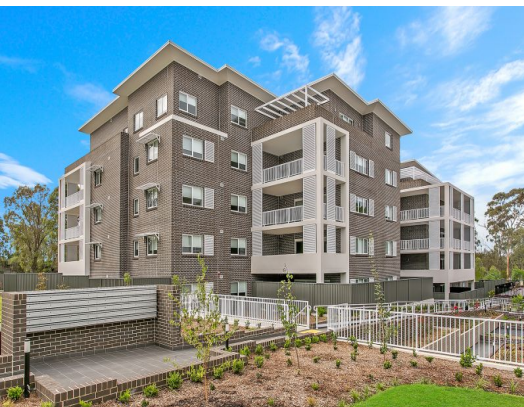


STONE



86/23 Regent Honeyeater Grove North Kellyville, NSW



Apartment plus study architecturally designed for occupants to enjoy an exceptional lifestyle at The Grove, Greygum Estate

- Two Generous sized bedrooms
- Master bedroom has walk-in robe and ensuite
- Vogue kitchen with quality stainless steel appliances, gas cooking, dishwasher, and stone bench tops
- Versatile separate home office/ study
- Stylish main bathroom with bath, shower, vanity & toilet
- Wonderful sunlit living area leads to a great paved entertaining court yard
- Internal European laundry complete with dryer
- Ducted reverse-cycle air conditioning

Price: Deposit Taken - \$560 per week
Available Date: 15/10/2021

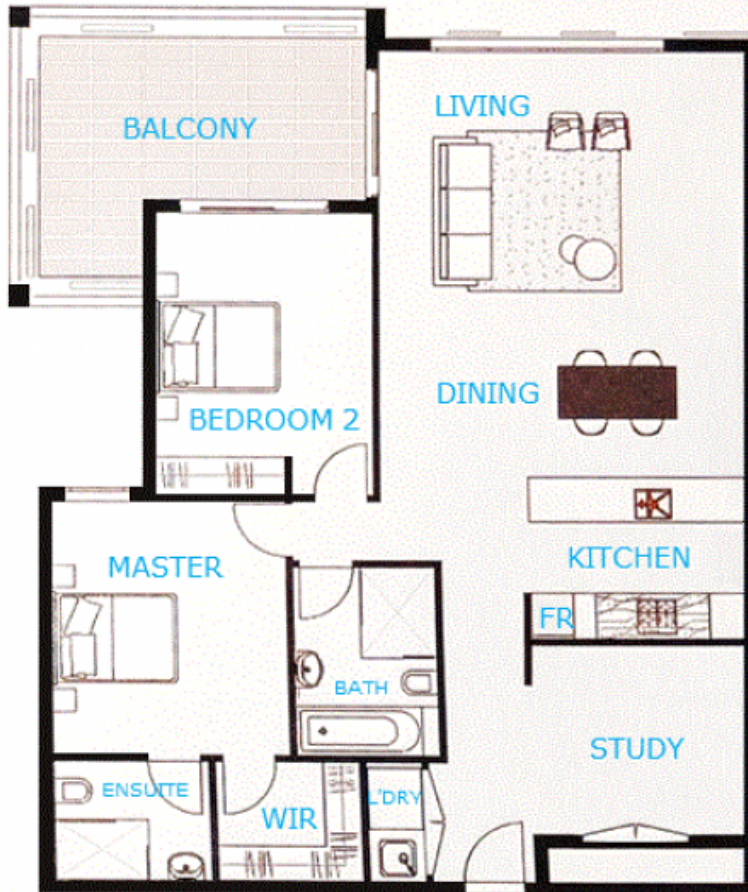


Ashleigh Gray

02 8893 2222

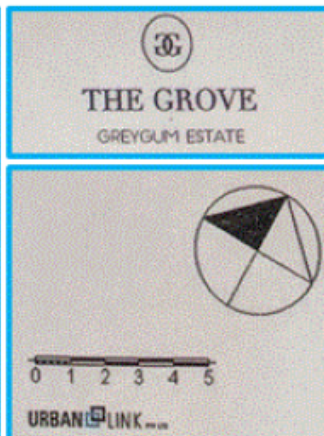
APARTMENT 86

23 Regent Honeyeater Grove, Kellyville



2 2 2

↑
ENTRY



BEDROOMS	2+ Study
INTERNAL FLOOR AREA	112m ²
BALCONY AREA	14.5m ²
CAR PARK SPACES	2
CARPARK & STORAGE AREA	32m ²
TOTAL AREA	158m²