



196 Copeland Road East Beecroft, NSW



Traditional family living -6 Month Lease only

Located in a whisper-quiet street, this solid two storey home offers a versatile design with up to three living areas and flowing indoor/outdoor entertaining to the rear lay a superb foundation for your vision, in a prized address just a 900-metre walk to Beecroft station and village centre.

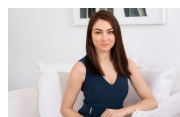
Price: Deposit Taken!

Available Date: 18/12/2021



Ashleigh Gray

02 8893 2222



Sarah Hastings

02 8893 2218



The floor plan is not to scale; measurements are indicative and in metres. Exterior elements are not in position. Plans should not be relied on. Interested parties should make and rely on their own enquiries.

196 Copeland Road, East Cheltenham

