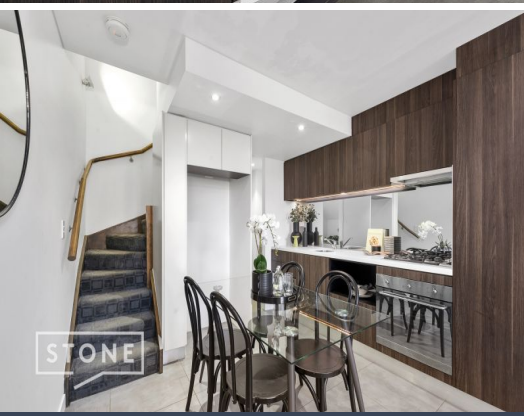


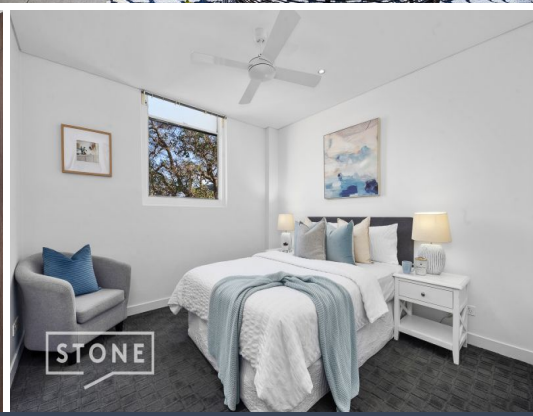
STONE



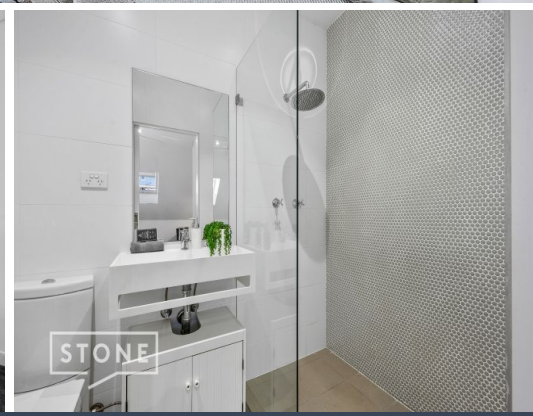
STONE



STONE



STONE



STONE

10/153 Bridge Road Glebe, NSW

2 

2 

Iconic contemporary terrace offering ultimate inner-city lifestyle

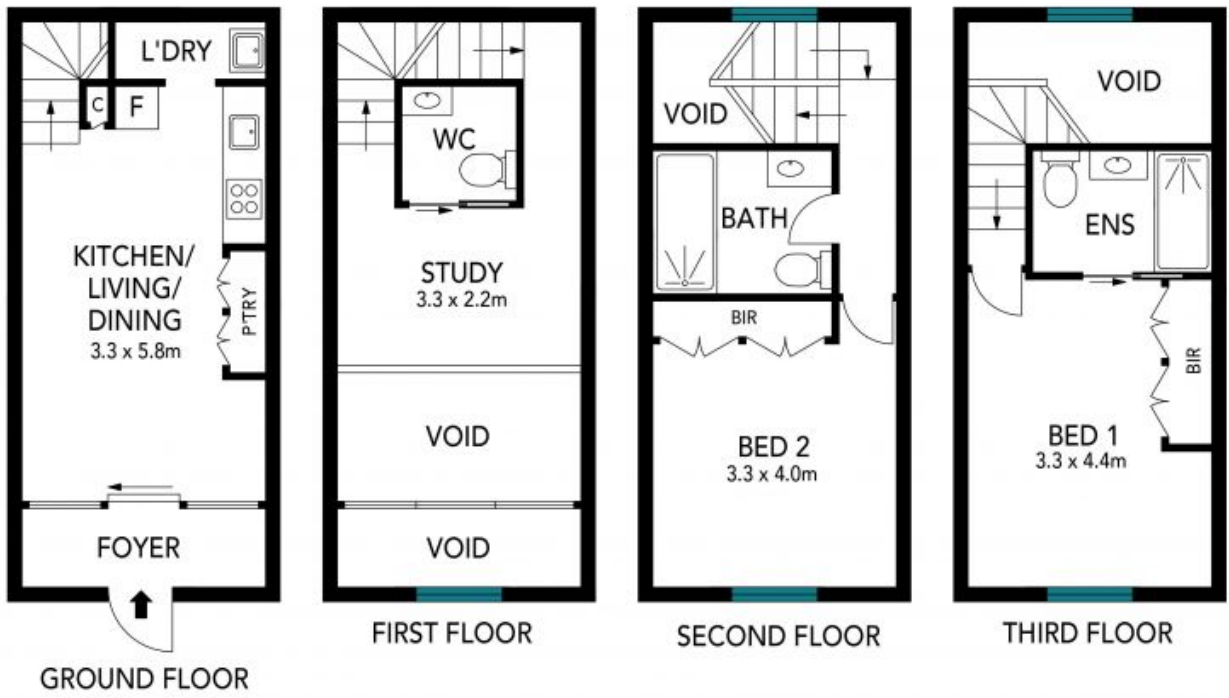
A creative conversion has breathed 21st century life into this impressive modern contemporary terrace. Transformed from a historic local icon into an attractively presented hideaway, it remains a significant slice of local history within the St James Hall building that stands today. One of just 11 and privately positioned on Rosebank Street, it's an utterly unique opportunity in a popular lifestyle precinct, steps from Sydney University, Foreshore Park, Tramsheds eateries and Glebe Point Road shops.

Price: For Sale \$1,000,000 - \$1,100,000
Council Rates: \$234.00 p/q
Water Rates: \$156.00 p/q
Strata Rates: \$953.00 p/q



Vincent Goh

0412 316 797



The floor plan is not to scale; measurements are indicative and in metres. Exterior elements are not in position. Plans should not be relied on. Interested parties should make and rely on their own enquiries.



10/153 Bridge Road, Glebe

