

STONE



8/24 May Street Eastwood, NSW

2  1  1 

Boutique top floor unit in the heart of Eastwood

Tucked to the rear of its complex with Eastwood station, shopping and popular dining precinct just metres around the corner, this modern two-bedroom apartment ensures effortless commuting and immediate lifestyle enjoyment in an ultra-desirable setting. It crowns the top floor of the building with high district views from its sunny open layout, in a thriving location where everything is at your fingertips.

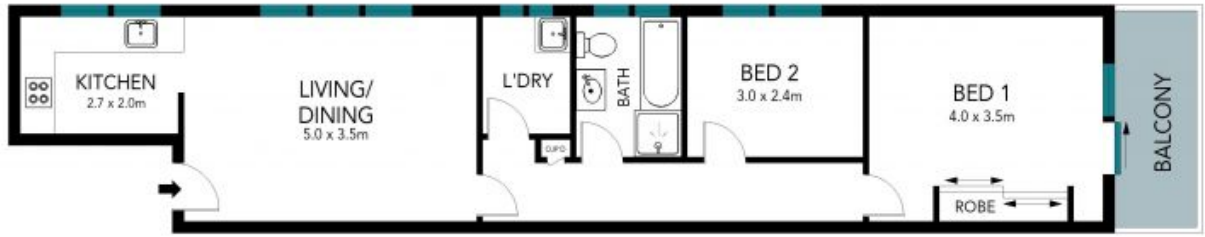
Price: Deposit Taken

Available Date: 22/10/2022

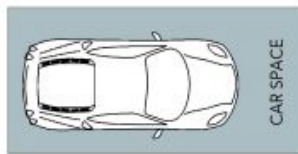
Stone Beecroft | Castle

02 8866 1500

Hill | Epping



TOP FLOOR



GROUND FLOOR

The floor plan is not to scale; measurements are indicative and in metres. Exterior elements are not in position. Plans should not be relied on. Interested parties should make and rely on their own enquiries.



8/24 May Street, Eastwood

