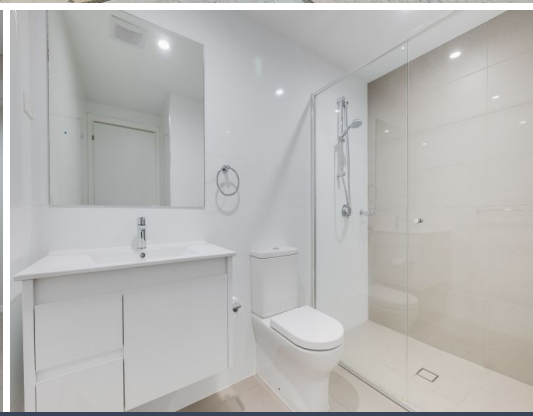




Gardenia
LANE COVE
62-70 Gordon Crescent



14/62 Gordon Crescent Lane Cove North, NSW

1 1 1

Modern apartment nestled within private locale

This apartment in the ultra-contemporary 'Gardenia' fuses sophisticated urban design, premium finishes and versatile open plan layout complete with large courtyard. Local village shops and Mowbray Road buses to the city and Chatswood, the apartment is surrounded by acres of urban parkland.

Price: Deposit Taken \$500 per week
Available Date: 22/12/2022

Stone Beecroft | Castle

02 8866 1500
Hill | Epping