



16 Boldwood Place Cherrybrook, NSW



Nature-lover's paradise with self-contained unit

Radiating natural beauty and stylish comfort, this beautifully renovated spacious residence on a generous 987.8sqm maximises its breathtaking bushland views through broad windows. Featuring a fully contained, two-bedroom dwelling downstairs, it's a flexible family haven or dual living opportunity, set an approx. 450m walk to Cherrybrook Technology High and 700m to John Purchase Public.

Price: Contact Agent

Council Rates: \$557.50 p/q

Water Rates: \$171.41 p/q



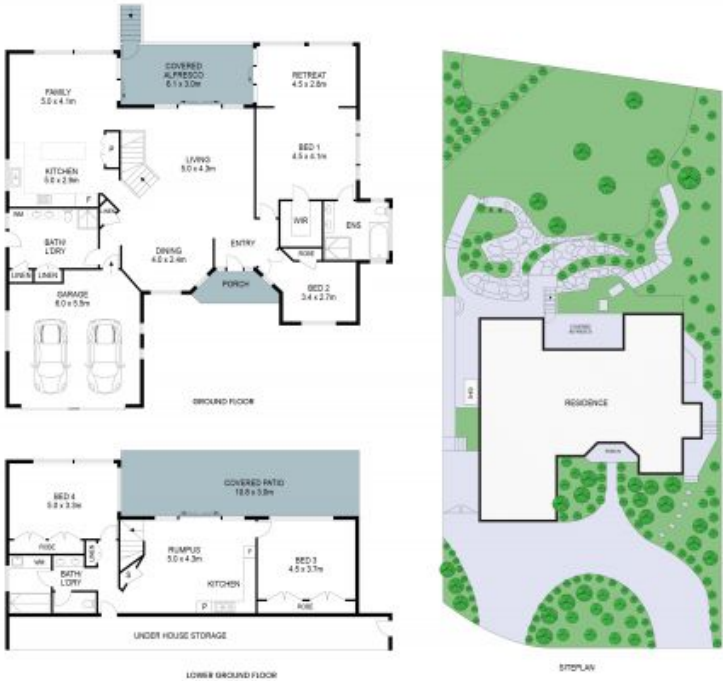
Graham Black

0400 381 217

16 Boldrewood Place, Cherrybrook



4
 3
 2
 311m²
 987.8m²



THIS IS AN ARTIST'S IMPRESSION - ALL DIMENSIONS, LAYOUTS AND TREES ARE APPROXIMATE
 ALL INTERESTED PARTIES SHOULD MAKE AND RELY ON THEIR OWN ENQUIRIES

